



Product Catalogue



Engineered Poly Products

Contents

Welcome	3
Water Tanks	4
Tank Fittings and Accessories	12
Tank Stands	15
Animal Products	17
Vehicle Accessories and Handling Products	31
Fertiliser Storage	34
Industrial Process Tanks	35
Liquid Transport and Dust Suppression	36
Fire Fighting Equipment	45
Diesel Transport Products	49
Trailer Equipment Accessories	54
AdBlue Storage and Cartage	55
Aquaculture Products	57
Pedestrian Barriers	59
Septic Systems	60
General Information	62

Welcome

A NEW NAME. A NEW IDENTITY.

On 1st July 2016, Rapid Plastics changed its name and brand identity to one that we believe more accurately reflects our values and a dynamic company of today. After all, since our inception the industry has changed and so have we. Our new name COERCO and new identity represent the contemporary and progressive approach we bring to the industry.

Our new look will serve as the foundation stone of our overall goal which is, to be at the forefront of industry change – the go-to specialists. It also represents our aspirations and signals our commitment to innovative thinking, exceptional service and providing an ever-expanding range of quality products.

No company is better positioned to do this. We are a world-class team of individuals whose experience and knowledge gives us unique insights into customer issues and allows us to provide practical, innovative, cost effective product solutions to meet their needs no matter the size or scale of the requirement. By combining our talents and resources we believe we've created something far more powerful for you – a company that offers superior knowledge and expertise, significantly better service and competitive pricing.

We believe our new brand represents a bright future for our customers and, consequently, ourselves.

And as always, we are focused on acting with integrity and putting your interests above all else and ensuring we live up to, and hopefully exceed, your expectations.

Finally from all of our team, we'd like to thank you for your support over the years. We value it highly and are determined to ensure you now receive an even better experience.

Welcome to the new COERCO.

WHAT ARE WE

OUR VISION

To be the supplier of choice to the mining, industrial, commercial, rural and domestic markets, guaranteeing a product of consistent quality manufactured in Australia from high-grade Australian materials.

OUR MISSION

To provide Australia's broadest range of "Engineered Poly Products" that facilitate liquid and dry storage and transport.

WHO ARE WE

We are practical, tough, reliable, and down to earth.

We are customer responsive; prepared to go the extra mile to provide customised solutions that meet specific customer needs.

WHAT DO WE STAND FOR

RESPECT

We work together in a spirit of mutual respect, focus on being the best we can be, and are honest and straight forward in our relationship with customers.

ACCOUNTABILITY

We act with integrity, are transparent in our business dealings and accountable for our actions.

PASSION

We are passionate about ensuring the quality of our products and are uncompromising in our manufacturing processes.

INVENTIVENESS

We are responsive to change and new needs and inventive in the way we create practical, customised solutions.

DELIVERY

We under-promise and over deliver. We perform beyond expectation.

Premium Tank Range

Water Tanks

20Year
Premium
Tank Warranty*



Features

- One piece construction
- Attractive Heritage design
- Corrugated for strength and traditional appearance
- UV stabilised to withstand our harsh climate
- Durable and impact resistant polyethylene for long life
- Self supporting lid design eliminates need for centre support pole
- Available in all colours (see colour chart on page 7)

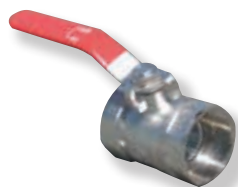
Premium Tank Range

Code	Capacity		Diameter	Wall Height	Total Height	Overflow Position	Retail Pricing (inc GST)
	Litres	Gallons					
RT250	250	55	600	1000	1100	3,6,9 or 12	\$309.10
RT1000	1000	220	1000	1300	1500	3,6,9 or 12	\$512.60
RT2500	2500	550	1400	1750	2000	3,6,9 or 12	\$770.00
RT3500	3500	750	1600	1800	2100	3,6,9 or 12	\$955.90
RT4500	4500	1000	1850	1800	2100	3,6,9 or 12	\$995.50
RT4500S	4500	1000	2400	1050	1400	3,6,9 or 12	\$1,087.90
RT9000	9000	2000	2400	2050	2400	3,6,9 or 12	\$1669.80
RT9000S	9000	2000	2950	1400	1800	3,6,9 or 12	\$1,782.00
RT9500	9500	2100	2600	1800	2150	3,6,9 or 12	\$1,826.00
RT13500	13500	3000	2950	1900	2300	3,6,9 or 12	\$2,116.40
RT22500	22500	5000	3550	2350	2950	3,6,9 or 12	\$2,882.00
RT32000	32000	7000	3950	2450	3100	3,6,9 or 12	\$4,062.30
RT45000	45000	10000	Tank Combination (2 x RT22500) Tank Combination (2 x RT32000)				\$5,659.50
RT64000	64000	14000					\$7,970.60

*Conditions Apply



**PVC Mesh
Overflow**



Ball Valve



**Twist Lock Manhole
Cover**



Brass Outlet

Tank Ordering Check List:

1. Dimensions of rainwater tank?
2. Fittings supplied with tank?
3. Position of fittings?
4. Selected tank colour?
5. Other accessories required?
6. Clearance available at property (large tanks only)?
7. Clear directions for truck driver (large tanks only)?
8. Specified ideal time frame for requiring tank?

Optional Extra's



Brass Inlet



**Leaf Strainer
& Cover**

Poly Water Storage Tanks

Water Tanks

Coerco poly water tanks are designed and manufactured under strict control to ensure they are suitable for drinking quality and fully UV stabilised in all colours to survive our harsh climate. Our tanks are manufactured using the best linear low density food grade polyethylene and in guidance with the following standards:

- AS/NZS 4766(INT) Polyethylene storage tanks for water and chemicals
- AS/NZS 4020 Aust. Std. for drinking water
- AS 2070 Part 1 & Part 8 Aust. Std. for food contact

Polyethylene is currently the largest volume produced plastic in the world and has been in use since its discovery by two research chemists in 1933, shortly before WWII. Today with advancement in technology, polyethylene offers such excellent chemical resistance and structural durability whilst maintaining material flexibility that it is the most efficient use of natural resources petroleum and natural gas. All Coerco's tanks incorporate a self-supporting roof design which have been designed and tested and have proven to be the strongest and most durable. No internal support is needed in any size tank.

Choosing a Tank

The installation of a large as possible rainwater tank and harvesting the rainwater that falls on your roof will minimise the impact of water shortages!

Tank Choice Checklist

Follow these easy steps to choose the tank that's right for your needs!

1. Calculate your likely annual usage from the water storage requirements table.
2. Using the water catchment table and the average rainfall calculate the amount of rainwater captured.
3. Now you can check your intended usage against the average annual catchment.
4. Identify your proposal tank and measure the space and height available.
5. Refer to tank details table for tank dimensions and select the maximum suitable size.
6. Choose a colour from the colour chart.



Average household water requirements

Application	1 Person	2 Person	4 Person	Usage	No. of Days	Litres
Daily Use*	250lt	360lt	650lt		365	
Washing Machine	120lt	130lt	150lt			
Dishwasher	35lt	35lt	35lt			
*Daily use includes bath, toilet, cleaning teeth etc.					Total Litres	

Average garden water requirements

Application	Garden Only	Garden & Lawn	Usage	No. of Days	Litres
Daily Use*	135lt	355lt		365	
Washing Machine	150lt	495lt			
Dishwasher	165lt	1125lt			
Total Litres					





Twistlock manhole cover



PVC Mesh Overflow



Solid brass threaded outlet fitting



All tanks are rotationally moulded and tested to ensure walls are the thickest at the base where water pressure is greatest



Moulded lifting lugs



Ball Valve

Guidelines

Application	Gallon	Litres
One Person	50/dy	250/dy
Two Person	80/dy	360/dy
Three Person	145/dy	435/dy
Shower	200/hr	15/min
Fill Bath	30gal	140ltr
Flush Toilet	1-3gal	5-15ltr
Sprinklers	180/hr	14/min
1/2" Tap @ 20psi	600/hr	45/min
3/4" Tap @ 20psi	1000/hr	75/min
Cattle per day	10-20	45-90
Milking Cows	30-40	135-180
Sheep/Pigs	1-2	4-9

Water Catchment

Roof Area	250mm	500mm	750mm	1000mm
36m ²	9000	18000	27000	36000
50m ²	12500	25000	37500	50000
100m ²	25000	50000	75000	100000
150m ²	37500	75000	112500	150000
200m ²	50000	100000	150000	200000
300m ²	75000	150000	225000	300000
400m ²	100000	200000	300000	400000
500m ²	125000	250000	375000	500000



An important feature of Coerco tanks is **one piece construction** roof and walls are moulded as one with no joins seams or parts lines down the walls. At no stage is the roof cut off and screwed back on.

Standard Tank Colours



Mist Green
(Pale Eucalypt)



Wheat
(Harvest)



Heritage Green
(Cottage Green)



Mountain Blue
(Deep Ocean)



Slate Grey
(Woodland Grey)



Rivergum
(Wilderness)



Beige



Smooth Cream
(Classic Cream™)



Heritage Red
(Manor Red)



Merino
(Paperbark)



Torris Blue



Black
(Night Sky™)

Optional COLORBOND® colours are available but may be subject to surcharge and/or delivery delay. Due to printing differences, some colours may vary. COLORBOND® and colour names are registered trademarks of Blue Scope Steel Ltd.™ Colour names are trademarks of Blue Scope Steel Ltd. Rapid Plastics colours represented match COLORBOND® steel colours.

Flat Walled Tanks

Water Tanks



Features

- One piece construction
- Sturdy, Reliable and built to last
- UV Stabilised to withstand our harsh climate
- Supplied with screw in lid, overflow, outlet and ball valve
- Self supporting lid design
- Manufactured in guidance with Australian standards
- Available all colours (see colour chart on page 7)

Flat Walled Tanks

Code	Capacity		Diameter	Wall Height	Total Height	Retail Pricing (inc GST)
	Litres	Gallons				
JRR720	720	160	800	1500	1600	\$480.70
JRR5300	5300	1170	1800	2000	2150	\$1,199.00
JRR10500	10500	2300	2495	2400	2450	\$2,246.20
JRR14000	14000	3100	2495	3000	3100	\$2,310.00
JRR25000	25000	5500	3950	1950	2590	\$3,056.90
JRR28000	28000	6100	3950	2000	2420	\$3,399.00
JRR50000	50000	11,100	4600	2900	3450	\$7,395.30

*Conditions Apply

Mini Rib Tanks

Water Tanks



Features

- Attractive corrugated minirib design for urban style
- Fully UV Stabilised
- Flexible overflow and outlet positions
- Manufactured in guidance with Australian Standards
- Available in all colours (see colour chart on page 7)

Mini Rib Tanks

Code	Capacity		Diameter	Wall Height	Total Height	Retail Pricing (inc GST)
	Litres	Gallons				
RMT250	250	55	500	1500	1620	\$301.40
RMT750	750	165	800	1660	1800	\$492.80
RMT1250	1250	275	1000	1800	1920	\$638.00
RMT2200	2200	485	1200	1920	2050	\$781.00
RMT5000	5000	1110	1900	1800	2050	\$1,141.80

*Conditions Apply

Slimline Tanks

Water Tanks



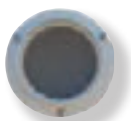
Features

- Attractive space saving design
- Ideal for under eave line or pathway situations
- Manufactured in guidance with Australian standards
- Available in all colours (refer to page 7)
- Stand available for RTS800 (refer Tankstands section)

Slimline Tanks

Code	Details	Dimensions	Wall Height	Total Height	Retail Pricing (inc GST)
RTS620	620LTR Slimline Tank		600	850	\$539.00
RTS800	800LTR Slimline Tank		1300	1450	\$566.50
RTS1075	1075LTR Slimline Tank		1580	1750	\$744.00
RTS1500	1500LTR Slimline Tank		1800	2000	\$746.90
RTS1550	1550LTR Slimline Tank		1700	1800	\$809.60
RTS1600	1600LTR Slimline Tank		1750	1900	\$772.00
RTS3000	3000LTR Slimline Tank		1900	2050	\$1,375.00

Standard Fittings



PVC Mesh Overflow



Leaf Strainer



Bib Cock



25mm Brass Outlet



Poly Lid

Steel Liner Tanks

Water Tanks



Features

- 3 sizes available
- Galvanised tank shell with heavy duty poly liner
- Economical cost/litre for water storage
- Available in most Colorbond colours

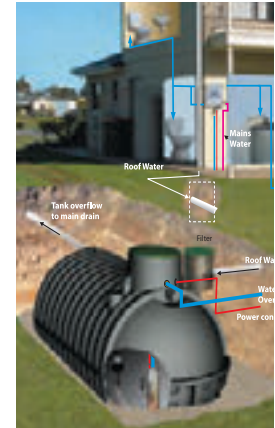
Steel Liner Tanks

Code	Capacity		Diameter	Wall Height	Total Height	Retail Pricing (inc GST)
	Litres	Gallons				
RLT90000	90,000	20,000	7200	2245	1900	Please enquire for latest pricing
RLT120000	120,000	26,650	8400	2245	2505	
RLT150000	150,000	33,300	9805	2245	2585	



Underground Water Storage Tanks

Water Tanks



URT3500



URT4000



URT7000



URT11000



URT15000



URT19000

Product images are a close guide only and may not represent actual product.

“Under Site - Out of Mind”

- A very neat package for collecting roof rain-water, filtering it and storing it underground, available on demand with no noise, out of sight, simple operation. Also available is a watermark approved changeover device upon request.

Features:

- Fully tested one piece tough poly tank
- Sealed lid reduces the possibility of anyone falling into tank
- Stainless Steel Submersible Pump with Automatic mains water Change Over Device (optional)



URT23000

Underground Tank Range

Code	Description	Retail Pricing (inc GST)
URT3500	3500 Litre Underground Tank including lid	\$2,942.50
URT4000	4000 Litre Underground Tank including lid	\$3,301.10
URT7000	7000 Litre Underground Tank including lid	\$5,079.80
URT11000	11,000 Litre Underground Tank including lid	\$9,131.10
URT15000	15,000 Litre Underground Tank including lid	\$12,254.00
URT19000	19,000 Litre Underground Tank including lid	\$17,300.80
URT23000	23,000 Litre Underground Tank including lid	\$21,358.70

Tank Fittings and Accessories

Tank Fittings and Accessories



Earth Rings

Features

- UV Stabilised poly earth ring designed to elevate any tank with applicable diameter
- Simply set up, fasten together and fill with sand to the top
- 600mm high and available to suit tanks with diameter 1000mm - 3950mm

Earth Rings

Code	Description (mm)	Retail Pricing (inc GST)
ER250	Earth ring 600mm high to suit tank diameter of 600mm	\$222.20
ER1000	Earth ring 600mm high to suit tank diameter of 1000mm	\$259.60
ER2500	Earth ring 600mm high to suit tank diameter of 1400mm	\$301.40
ER3500	Earth ring 600mm high to suit tank diameter of 1600mm	\$336.60
ER4500	Earth ring 600mm high to suit tank diameter of 1850mm	\$390.50
ER9000	Earth ring 600mm high to suit tank diameter of 2400mm	\$631.40
ER9500	Earth ring 600mm high to suit tank diameter of 2600mm	\$679.80
ER13500	Earth ring 600mm high to suit tank diameter of 2950mm	\$716.10
ER22500	Earth ring 600mm high to suit tank diameter of 3550mm	\$768.90
ER32000	Earth ring 600mm high to suit tank diameter of 3950mm	\$811.80



Pump Covers

Features

- Will provide full weather protection of any pump not exceeding dimensions in table below
- Available in all tank colours (see colour chart on page 7)

Pump Covers

Code	Description (mm)	Retail Pricing (inc GST)
RTPC-1	All weather poly pump cover - small - 770(L) x 470(W) x 550(H)	\$137.50
RTPC-2	All weather poly pump cover - large - 670(L) x 550(W) x 700(H)	\$159.50
RTPC-3	All weather poly pump cover - economy - 690(L) x 590(W) x 600(H)	\$108.90



RTPC-1



RTPC-2



RTPC-3

Tank Fittings and Accessories

Tank Fittings and Accessories



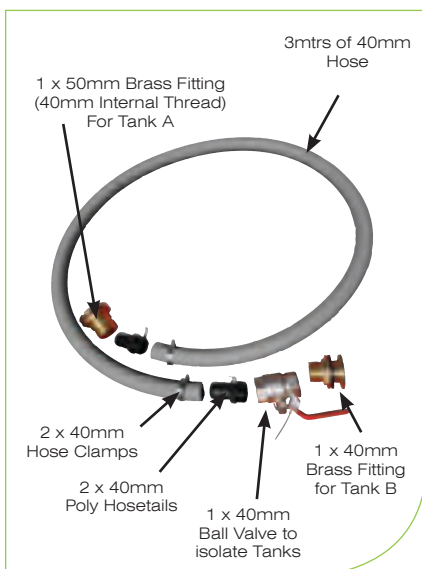
Tank Tie Down Kit

Features

- Secure your tank easily to anchor points
- Provides peace of mind for high wind areas
- Available as certified for cyclonic conditions

Tank Tie Down Kits

Code	Description	Retail Pricing (inc GST)
TTK-01	Tank tie down kit - not certified for cyclonic regions	\$364.10
TTK-02	Tank tie down kit - includes 3x lashings rated for cyclonic regions (suits tanks up to 32,000ltrs)	\$ 748.00
TTK-03	Tank tie down kit - includes 4x lashings rated for cyclonic regions (suits JRR50,000 tank)	\$ 979.00



Combo Tank Joiner Kit

Combo Tank Joiner Kits

Code	Description	Retail Pricing (inc GST)
TJK-01	Combo Tank Joiner Kit - includes 3mtrs 40mm hose & fittings to connect 2x Poly tanks at base	\$151.80

Tank Fittings and Accessories

Tank Fittings and Accessories

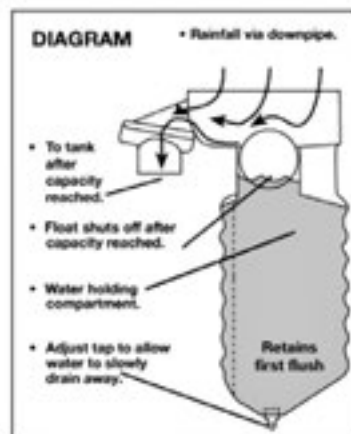
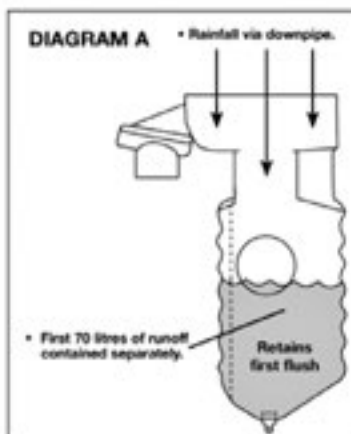


Features

- Collects the first 70 litres of sedimented run-off, keeping it from entering the main tank
- Simple and effective operation, easy to fit to your Coerco tank
- Available in all tank colours (see colour chart on page 7)

Water Diverters

Code	Description	Retail Pricing (inc GST)
RT70WD	First Flush Water Diverter - 70L	\$260.70



Tank Fittings and Accessories

Tank Fittings and Accessories



Dipstick (TAL-7)

- Out of reach of animals
- 360° all round visibility
- Great for 'Cup & Saucer' Tanks



Levetator (TAL-9)

- Shows actual water level
- Trouble free use
- Easy to install



Liquidator (TAL-10)

- Ideal for chemical tanks, only the float is in contact with liquid
- Captive guided indicator, isn't bothered by wind or other disturbances



Liquidator 2 (TAL-12)

- Suitable for tanks up to 3mtr
- True reading with high visibility
- Simple to Install



(TAL-13)

- Quick and easy to install
- No batteries or wiring required
- Low maintenance requirements
- UV resistant

Tank Level Gauges

Code	Description	Retail Pricing (inc GST)
TAL-7	"Dip-stick" tank level gauge	\$240.90
TAL-9	"Levetator" tank level gauge	\$150.70
TAL-10	"Liquidator" tank level gauge	\$192.50
TAL-12	"Liquidator 2" tank level gauge	\$216.70
TAL-13	Tank level monitor	\$42.90

Poly Tank Fittings



- Available in 6 sizes
- Manufactured from UV Stabilised Glass Fibre Reinforced Nylon giving a weather, termite, fungi and bacterial resistance

Tank Fittings

Code	Description	Retail Pricing (inc GST)
COMP-19-02	25mm (1") Poly Fitting	\$11.00
COMP-19-03	32mm (1 1/4") Poly Fitting	\$18.70
COMP-19-04	40mm (1 1/2") Poly Fitting	\$23.10
COMP-19-05	50mm (2") Poly Fitting	\$27.50
COMP-19-06	80mm (3") Poly Fitting	\$96.80
COMP-19-07	100mm (4") Poly Fitting	\$129.80
COMP-01-01	25mm (1") Brass Fitting	\$33.00
COMP-01-02	32mm (1 1/4") Brass Fitting	\$36.30
COMP-01-03	40mm (1 1/2") Brass Fitting	\$37.40
COMP-01-04	50mm (2") Brass Fitting	\$47.30
COMP-01-05	80mm (3") Brass Fitting	\$139.70
COMP-01-06	100mm (4") Brass Fitting	\$243.10

Brass Tank Fittings



- Brass tank fittings have internal & external threads (25-50mm)
- Locking nut is left hand thread for secure fit. Doesn't come loose when fitting valves etc

Small Domestic Tank Stands

Tank Stands



Features

- Tank stands are designed to suit 800 litre slimline tank and 1000 litre storage tank. (refer pages 2-8 - Water Tanks section)
- Strong Galvanised construction
- Fully supports tank
- Made to last

Small Domestic Tank Stands

Code		Description	Retail Pricing (inc GST)
GTS1000		Galvanised tank stand - suits (RT1000) - (850L x 850W x 550H)	\$311.30
GTS800		Galvanised tank stand - suits (RTS800) - (1050L x 550W x 550H)	\$269.50

Large Tank Stands

Tank Stands



Features

- These tank stands are engineered to carry the imposed loads of the size tank specified, in most areas of Western Australia.
- Their suitability should be confirmed in cyclonic or earthquake zones before ordering.
- Tank stands in larger sizes, to suit larger tanks, or for substances other than water are available.
- Available in wide range of sizes and configured with either bolt down or concrete footing uprights
- All Galvanised material used in manufacturing
- Safety ladders and railwork available on request
- Large load ratings (Cyclone etc)
- Statewide delivery available



Industrial Tank Stands

Code	Description	Retail Pricing (inc GST)
ITS500-06	600mm high - (suits tank diameter up to 1400mm)	Please enquire for latest pricing
ITS500-18	1800mm high - (suits tank diameter up to 1400mm)	
ITS500-30	3000mm high - (suits tank diameter up to 1400mm)	
ITS500-36	3600mm high - (suits tank diameter up to 1400mm)	
ITS500-45	4500mm high - (suits tank diameter up to 1400mm)	
ITS500-50	5000mm high - (suits tank diameter up to 1400mm)	
ITS1000-06	600mm high - (suits tank diameter up to 1850mm)	
ITS1000-18	1800mm high - (suits tank diameter up to 1850mm)	
ITS1000-30	3000mm high - (suits tank diameter up to 1850mm)	
ITS1000-36	3600mm high - (suits tank diameter up to 1850mm)	
ITS1000-45	4500mm high - (suits tank diameter up to 1850mm)	
ITS1000-60	6000mm high - (suits tank diameter up to 1850mm)	
ITS1000-70	7000mm high - (suits tank diameter up to 1850mm)	
ITS2000-06	600mm high - (suits tank diameter up to 2600mm)	
ITS2000-18	1800mm high - (suits tank diameter up to 2600mm)	
ITS2000-30	3000mm high - (suits tank diameter up to 2600mm)	
ITS2000-36	3600mm high - (suits tank diameter up to 2600mm)	
ITS2000-45	4500mm high - (suits tank diameter up to 2600mm)	
ITS2000-60	6000mm high - (suits tank diameter up to 2600mm)	
ITS2000-70	7000mm high - (suits tank diameter up to 2600mm)	
ITS5000-06	600mm high - (suits tank diameter up to 3550mm)	
ITS5000-18	1800mm high - (suits tank diameter up to 3550mm)	
ITS5000-30	3000mm high - (suits tank diameter up to 3550mm)	
ITS5000-36	3600mm high - (suits tank diameter up to 3550mm)	
ITS5000-45	4500mm high - (suits tank diameter up to 3550mm)	
ITS5000-50	5000mm high - (suits tank diameter up to 3550mm)	

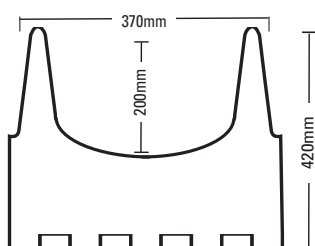
All Poly Stock Troughs

Animal Products



Features

- Unmatched strength through one piece moulding
- Exceptionally durable and versatile
- Easy to clean with round sweep out end
- Standard in beige colour with 1 1/4" float valve - 1 1/2" and 2" float valve optional
- Full float valve protection
- Designed and manufactured in WA for harsh WA conditions
- Optional waterfilled base for improved stability



All Poly Stock Troughs

Code	Description (mm)	Retail Pricing (inc GST)
PTR39X	(2400L x 500W x 450H) - without float valve	\$460.90
PTR39WL	(2400L X 500W X 450H) - with 32mm (low pressure) float valve™	\$537.90
PTR39WH	(2400L X 500W X 450H) - with 32mm (high pressure) float valve	\$537.90
PTR39/40L	(2400L X 500W X 450H) - with 40mm (low pressure) float valve	\$586.30
PTR39/40H	(2400L X 500W X 450H) - with 40mm (high pressure) float valve	\$586.30
PTR39/50L	(2400L X 500W X 450H) - with 50mm (low pressure) float valve	\$608.30
PTR39/50H	(2400L X 500W X 450H) - with 50mm (high pressure) float valve	\$608.30
PTR40X	(3600L X 500W X 450H) - without float valve	\$622.60
PTR40WL	(3600L X 500W X 450H) - with 32mm (low pressure) float valve	\$698.50
PTR40WH	(3600L X 500W X 450H) - with 32mm (high pressure) float valve	\$698.50
PTR40/40L	(3600L X 500W X 450H) - with 40mm (low pressure) float valve	\$748.00
PTR40/40H	(3600L X 500W X 450H) - with 40mm (high pressure) float valve	\$748.00
PTR40/50L	(3600L X 500W X 450H) - with 50mm (low pressure) float valve	\$768.90
PTR40/50H	(3600L X 500W X 450H) - with 50mm (high pressure) float valve	\$768.90
+WFB	All poly stock trough water filled base option	\$61.60

Supa Troughs

Animal Products



Features

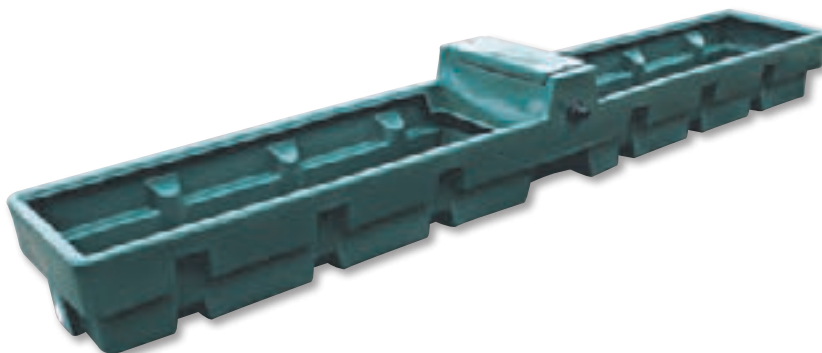
- 25mm float valve as standard (larger sizes optional)
- One piece trough incorporating float cover
- Long lasting UV resistant polyethylene and stainless steel fasteners (no parts to rust)
- Easy float valve access
- Raised cover and float valve allows trough to fill to full capacity
- Ribbed for added strength

Supa Troughs with Float Valve

Code	Description (mm)	Retail Pricing (inc GST)
SPT12	600ltr- (3700L X 600W X 380H) - with 25mm (1") float valve	\$698.50
SPT12/32H	600ltr- (3700L X 600W X 380H) - with 32mm (high pressure) float valve	\$750.20
SPT12/32L	600ltr- (3700L X 600W X 380H) - with 32mm (low pressure) float valve	\$750.20
SPT12/40H	600ltr- (3700L X 600W X 380H) - with 40mm (high pressure) float valve	\$800.80
SPT12/40L	600ltr- (3700L X 600W X 380H) - with 40mm (low pressure) float valve	\$800.80
SPT12/50H	600ltr- (3700L X 600W X 380H) - with 50mm (high pressure) float valve	\$821.70
SPT12/50L	600ltr- (3700L X 600W X 380H) - with 50mm (low pressure) float valve	\$821.70



Protected Float Valve Compartment

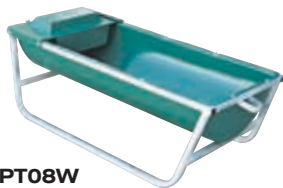


Steel Frame Longline Troughs

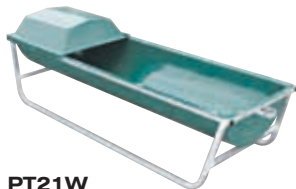
Animal Products

Features

- Durable UV stabilised polyethylene for long outdoor life
- Rust free polyethylene will not corrode
- Light weight for ease of relocation
- Smooth finish and 2" drain bung facilitates cleaning
- Strong 25mm x 25mm galvanised steel frames



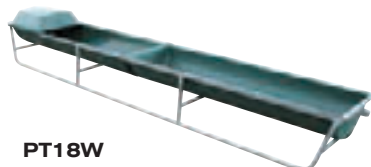
PT08W



PT21W



PT06W



PT18W



PT16W

Steel Frame Longline Water Troughs

Code	Description (mm)	Retail Pricing (inc GST)
PT08W	98ltr - (1200L X 550W X 450H) - with 25mm (1") float valve	\$346.50
PT21W	144ltr - (1800L X 550W X 450H) - with 25mm (1") float valve	\$441.10
PT21/32H	144ltr - (1800L X 550W X 450H) - with 32mm (high pressure) float valve	\$491.70
PT21/32L	144ltr - (1800L X 550W X 450H) - with 32mm (low pressure) float valve	\$491.70
PT21/40H	144ltr - (1800L X 550W X 450H) - with 40mm (high pressure) float valve	\$504.90
PT21/40L	144ltr - (1800L X 550W X 450H) - with 40mm (low pressure) float valve	\$504.90
PT21/50H	144ltr - (1800L X 550W X 450H) - with 50mm (high pressure) float valve	\$541.20
PT21/50L	144ltr - (1800L X 550W X 450H) - with 50mm (low pressure) float valve	\$541.20
PT06W	190ltr - (2400L X 550W X 450H) - with 25mm (1") float valve	\$489.50
PT06/32H	190ltr - (2400L X 550W X 450H) - with 32mm (high pressure) float valve	\$540.10
PT06/32L	190ltr - (2400L X 550W X 450H) - with 32mm (low pressure) float valve	\$540.10
PT06/40H	190ltr - (2400L X 550W X 450H) - with 40mm (high pressure) float valve	\$553.30
PT06/40L	190ltr - (2400L X 550W X 450H) - with 40mm (low pressure) float valve	\$553.30
PT06/50H	190ltr - (2400L X 550W X 450H) - with 50mm (high pressure) float valve	\$589.60
PT06/50L	190ltr - (2400L X 550W X 450H) - with 50mm (low pressure) float valve	\$589.60
PT18W	288ltr - (3600L X 550W X 450H) - with 25mm (1") float valve	\$678.70
PT18/32H	288ltr - (3600L X 550W X 450H) - with 32mm (high pressure) float valve	\$729.30
PT18/32L	288ltr - (3600L X 550W X 450H) - with 32mm (low pressure) float valve	\$729.30
PT18/40H	288ltr - (3600L X 550W X 450H) - with 40mm (high pressure) float valve	\$742.50
PT18/40L	288ltr - (3600L X 550W X 450H) - with 40mm (low pressure) float valve	\$742.50
PT18/50H	288ltr - (3600L X 550W X 450H) - with 50mm (high pressure) float valve	\$778.80
PT18/50L	288ltr - (3600L X 550W X 450H) - with 50mm (low pressure) float valve	\$778.80
PT16W	380ltr - (4800L X 550W X 450H) - with 25mm (1") float valve	\$751.30
PT16/32H	380ltr - (4800L X 550W X 450H) - with 32mm (high pressure) float valve	\$801.90
PT16/32L	380ltr - (4800L X 550W X 450H) - with 32mm (low pressure) float valve	\$801.90
PT16/40H	380ltr - (4800L X 550W X 450H) - with 40mm (high pressure) float valve	\$815.10
PT16/40L	380ltr - (4800L X 550W X 450H) - with 40mm (low pressure) float valve	\$815.10
PT16/50H	380ltr - (4800L X 550W X 450H) - with 50mm (high pressure) float valve	\$851.40
PT16/50L	380ltr - (4800L X 550W X 450H) - with 50mm (low pressure) float valve	\$851.40

Steel Frame Longline Feed Troughs

Code	Description (mm)	Retail Pricing (inc GST)
PT08F	98ltr - (1200L X 550W X 450H) - no float valve	\$212.30
PT21F	144ltr - (1800L X 550W X 450H) - no float valve	\$271.70
PT06F	190ltr - (2400L X 550W X 450H) - no float valve	\$331.10
PT18F	288ltr - (3600L X 550W X 450H) - no float valve	\$534.60
PT16F	380ltr - (4800L X 550W X 450H) - no float valve	\$653.40

M Series Troughs

Animal Products



Features

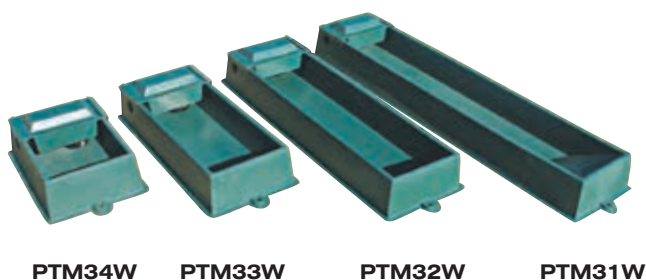
- Strong all-poly construction suitable for corrosive environments
- Light and easy to handle facilitates relocation
- Smooth finish for ease of cleaning
- Peg down points to prevent livestock pushing trough around
- 4 sizes to choose from to meet all needs
- Covered float prevents stock damage to float

M Series Water Troughs

Code	Description (mm)	Retail Pricing (inc GST)
PTM31W	Water trough - 230ltr - (2400L X 580W X 250H) - with 25mm (1") float valve	\$293.70
PTM32W	Water trough - 170ltr - (1800L X 580W X 250H) - with 25mm (1") float valve	\$276.10
PTM33W	Water trough - 110ltr - (1200L X 580W X 250H) - with 25mm (1") float valve	\$213.40
PTM34W	Water trough - 70ltr - (750L X 580W X 250H) - with 25mm (1") float valve	\$201.30

M Series Feed Troughs

Code	Description (mm)	Retail Pricing (inc GST)
PTM31F	Feed trough - 230ltr - (2400L X 580W X 250H) - no float valve	\$211.20
PTM32F	Feed trough - 170ltr - (1800L X 580W X 250H) - no float valve	\$189.20
PTM33F	Feed trough - 110ltr - (1200L X 580W X 250H) - no float valve	\$128.70
PTM34F	Feed trough - 70ltr - (750L X 580W X 250H) - no float valve	\$116.60

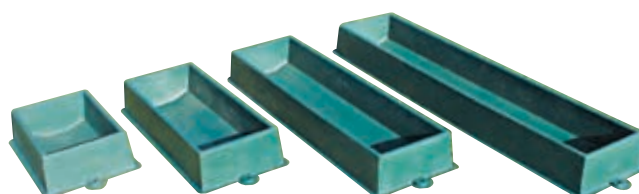


PTM34W

PTM33W

PTM32W

PTM31W



PTM34F

PTM33F

PTM32F

PTM31F

Ultra Tub Troughs

Animal Products



PTU3



PTU6



PTU12



PTU25



Float valve protected by slide up access cover

Features

- 25mm float valve standard on all Ultra-Tubs (with larger sizes optional)
- Float compartment moulded as part of trough
- Raised float to allow complete filling of trough
- All pipework protected by trough surround
- 50mm drain bung
- Exceptionally strong design
- Stainless steel float valve cover fasteners

Ultra Tub Troughs

Code	Description (mm)	Retail Pricing (inc GST)
PTU3*	250ltr- (1100D X 450H) - with 25mm (1") float valve	\$339.90
PTU6	600ltr- (1400D X 550H) - with 25mm (1") float valve	\$609.40
PTU6/32H	600ltr- (1400D X 550H) - with 32mm (high pressure) float valve	\$661.10
PTU6/32L	600ltr- (1400D X 550H) - with 32mm (low pressure) float valve	\$661.10
PTU6/40H	600ltr- (1400D X 550H) - with 40mm (high pressure) float valve	\$675.40
PTU6/40L	600ltr- (1400D X 550H) - with 40mm (low pressure) float valve	\$675.40
PTU6/50H	600ltr- (1400D X 550H) - with 50mm (high pressure) float valve	\$711.70
PTU6/50L	600ltr- (1400D X 550H) - with 50mm (low pressure) float valve	\$711.70
PTU12	1200ltr- (1750D X 600H) - with 25mm (1") float valve	\$768.90
PTU12/32H	1200ltr- (1750D X 600H) - with 32mm (high pressure) float valve	\$820.60
PTU12/32L	1200ltr- (1750D X 600H) - with 32mm (low pressure) float valve	\$820.60
PTU12/40H	1200ltr- (1750D X 600H) - with 40mm (high pressure) float valve	\$833.80
PTU12/40L	1200ltr- (1750D X 600H) - with 40mm (low pressure) float valve	\$833.80
PTU12/50H	1200ltr- (1750D X 600H) - with 50mm (high pressure) float valve	\$871.20
PTU12/50L	1200ltr- (1750D X 600H) - with 50mm (low pressure) float valve	\$871.20
PTU25	2500ltr- (2400D X 650H) - with 25mm (1") float valve	\$1,205.60
PTU25/32H	2500ltr- (2400D X 650H) - with 32mm (high pressure) float valve	\$1,257.30
PTU25/32L	2500ltr- (2400D X 650H) - with 32mm (low pressure) float valve	\$1,257.30
PTU25/40H	2500ltr- (2400D X 650H) - with 40mm (high pressure) float valve	\$1,269.40
PTU25/40L	2500ltr- (2400D X 650H) - with 40mm (low pressure) float valve	\$1,269.40
PTU25/50H	2500ltr- (2400D X 650H) - with 50mm (high pressure) float valve	\$1,306.80
PTU25/50L	2500ltr- (2400D X 650H) - with 50mm (low pressure) float valve	\$1,306.80

*PTU3 is only available with 25mm (1") float valve

Cup & Saucer Tanks

Animal Products



CS10000
(Optional 75mm Bung)



CS5000



CS2700

Features

- Extremely durable
- Tie down lugs on tank
- Easy action float cover with all stainless steel fasteners - no rust
- High / Low level inlets for filling at ground level or straight from windmill etc
- 50mm drain plug in all size saucers with 75mm optional on CS10000
- 25mm inlet float valve
- 32mm saucer float valve
- Standard in beige colour with float cover and stainless steel fasteners



Protected float valve compartment and stainless steel fasteners

Poly Cup and Saucer Tanks

Code	Description (mm)	Retail Pricing (inc GST)
CS2700	Poly Cup & Saucer Tank - 600 Gallon / 2700Ltr - (2000D X 2000H)	\$1,773.20
CS5000	Poly Cup & Saucer Tank - 1100 Gallon / 5000Ltr - (2400D X 2000H)	\$2,288.00
CS10000	Poly Cup & Saucer Tank - 2200 Gallon / 10000Ltr - (3300D X 2000H)	\$3,087.70

Animal Care

Animal Products



Features

- Double Skin Structure – Thermal Break
- Lifting Bar
- Galvanized removable/lockable door
- Removable/fold-away poly fender
- Folding window at rear of hut
- Provision for tie down pegs
- Ergonomic handle for easy lifting on poly fender
- Removable fencing around fender (optional extra)
- Long lasting UV resistant polyethylene construction
- Corrosion resistant

Pig Farrowing Hut

Code	Description	Retail Pricing (inc GST)
PH-01	Double skin Poly Farrowing Hut (2000mm L x 2400mm W x 1300mm H)	Please enquire for latest pricing

Pig Farrowing Hut Accessories

Code	Description	Retail Pricing (inc GST)
PHFND-01	Removable & Folding Poly Fender to Suit PH-01	Please enquire for latest pricing
PHFF-03	Removable Galvanized Fence to suit Fender (3 Panels)	

Other Benefits

1. Easy to stack for transport and storage
2. Folding fender and lockable door
3. Optional fence to suit fender



Animal Care

Animal Products



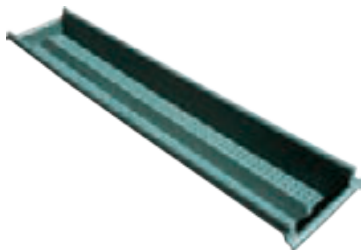
Continuous Dry Feed Trough

Features

- Lightweight
- Will not rust or spoil
- Flexible (if driven on)
- End to end linking feature (any amount can be joined together)
- Holds approximately 8kg of Oats/Barley per metre
- Stackable for storage
- No sharp edges or joins
- Trough with ends available on request - state left or right

Continuous Dry Feed Trough

Code	Description (mm)	Retail Pricing (inc GST)
CFT8	Continuous Dry Feed Trough	\$101.20
CFTA-1	Anchoring Pegs (Pkt 6)	\$13.20



Footrot Bath

Features

- Lightweight for easy handling
 - Maximum 80 litre capacity
 - Base dimples open foot, ensuring penetration
 - Fully chemical resistant
 - End to end linkable
 - Specially designed non-slip floor
 - Centre pyramid shape keep hooves either side of the trough
 - UV stabilised for constant outdoor use
- *Not recommended for cattle

Footrot Bath

Code	Description (mm)	Retail Pricing (inc GST)
RFRB	Poly Footrot Bath - 80Ltr - (2400L X 480W X 200H)	\$253.00



Round Troughs

Animal Products



PT58W
(Optional 75mm Bung)



PT56W



PT54W



PT52W



PT50W



Trough Features

- Tough and durable polyethylene with a long history of use on farms
- Light and easy to move around
- Smooth finish incorporating 2" drain bung facilitates cleaning
- Bare tub can be used for feed
- Available with or without float kit

Float Cover Features

- Simple design and operation
- Cover positively located and attached to prevent stock damage
- 1" float valve standard - larger sizes available



Optional Float Valve Kit

Round Troughs

Code	Description (mm)	Retail Pricing (inc GST)
PT50W	250 ltr - (1000D x 450H) - without float valve kit	\$221.10
PT52W	500 ltr - (1300D x 500H) - without float valve kit	\$328.90
PT54W	1000 ltr - (1600D x 600H) - without float valve kit	\$480.70
PT56W	1500 ltr - (2000D x 650H) - without float valve kit	\$724.90
PT58W	2000 ltr - (2300D x 650H) - without float valve kit	\$829.40

Round Troughs with Float Valve Kit

Code	Description (mm)	Retail Pricing (inc GST)
PT50WK	250 ltr - (1000D x 450H) - with 25mm (1") float valve kit	\$314.60
PT52WK	500 ltr - (1300D x 500H) - with 25mm (1") float valve kit	\$431.20
PT52WK/32H	500 ltr - (1300D x 500H) - with 32mm (high pressure) float valve kit	\$496.10
PT52WK/32L	500 ltr - (1300D x 500H) - with 32mm (low pressure) float valve kit	\$496.10
PT52WK/40H	500 ltr - (1300D x 500H) - with 40mm (high pressure) float valve kit	\$520.30
PT52WK/40L	500 ltr - (1300D x 500H) - with 40mm (low pressure) float valve kit	\$520.30
PT52WK/50H	500 ltr - (1300D x 500H) - with 50mm (high pressure) float valve kit	\$540.10
PT52WK/50L	500 ltr - (1300D x 500H) - with 50mm (low pressure) float valve kit	\$540.10
PT54WK	1000 ltr - (1600D x 600H) - with 25mm (1") float valve kit	\$642.40
PT54WK/32H	1000 ltr - (1600D x 600H) - with 32mm (high pressure) float valve kit	\$683.10
PT54WK/32L	1000 ltr - (1600D x 600H) - with 32mm (low pressure) float valve kit	\$683.10
PT54WK/40H	1000 ltr - (1600D x 600H) - with 40mm (high pressure) float valve kit	\$701.80
PT54WK/40L	1000 ltr - (1600D x 600H) - with 40mm (low pressure) float valve kit	\$701.80
PT54WK/50H	1000 ltr - (1600D x 600H) - with 50mm (high pressure) float valve kit	\$738.10
PT54WK/50L	1000 ltr - (1600D x 600H) - with 50mm (low pressure) float valve kit	\$738.10
PT56WK	1500 ltr - (2000D x 650H) - with 25mm (1") float valve kit	\$884.40
PT56WK/32H	1500 ltr - (2000D x 650H) - with 32mm (high pressure) float valve kit	\$924.00
PT56WK/32L	1500 ltr - (2000D x 650H) - with 32mm (low pressure) float valve kit	\$924.00
PT56WK/40H	1500 ltr - (2000D x 650H) - with 40mm (high pressure) float valve kit	\$946.00
PT56WK/40L	1500 ltr - (2000D x 650H) - with 40mm (low pressure) float valve kit	\$946.00
PT56WK/50H	1500 ltr - (2000D x 650H) - with 50mm (high pressure) float valve kit	\$980.10
PT56WK/50L	1500 ltr - (2000D x 650H) - with 50mm (low pressure) float valve kit	\$980.10
PT58WK	2000 ltr - (2300D x 650H) - with 25mm (1") float valve kit	\$988.90
PT58WK/32H	2000 ltr - (2300D x 650H) - with 32mm (high pressure) float valve kit	\$1,028.50
PT58WK/32L	2000 ltr - (2300D x 650H) - with 32mm (low pressure) float valve kit	\$1,028.50
PT58WK/40H	2000 ltr - (2300D x 650H) - with 40mm (high pressure) float valve kit	\$1,049.40
PT58WK/40L	2000 ltr - (2300D x 650H) - with 40mm (low pressure) float valve kit	\$1,049.40
PT58WK/50H	2000 ltr - (2300D x 650H) - with 50mm (high pressure) float valve kit	\$1,084.60
PT58WK/50L	2000 ltr - (2300D x 650H) - with 50mm (low pressure) float valve kit	\$1,084.60

Fence Drinkers

Animal Products



ET01W

- Large 50 litre capacity
- 1" float valve
- Float valve protected with cover
- Galvanised mounting brackets
- Stainless steel fasteners



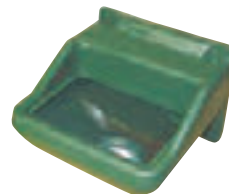
ET05W

- Sturdy waterer with 1/2" float and float cover for protection
- Drain bung for easy cleaning
- UV stabilised for long-life
- Very strong and durable
- All poly construction - no rust



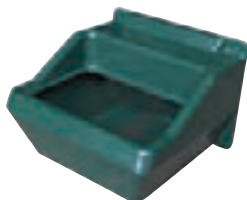
ET06W

- Sturdy waterers with 1/2" float and float cover for protection
- Versatile drinker for use with many types of animals
- Drain bung for easy cleaning
- UV stabilised for long-life
- Very strong and durable



ET07W

- Versatile drinker for use with many types of animals
- Drain bung for easy cleaning
- Very strong and durable
- All poly construction - no rust
- Strong construction to withstand years of use



ET08W

- Versatile drinker for use with many types of animals
- Drain bung for easy cleaning
- UV stabilised for long-life
- All poly construction - no rust
- Includes 1/2" float valve

Fence Drinkers

Code	Description (mm)	Retail Pricing (inc GST)
ET01W	Fence Drinker Trough - 50Ltr - (580L X 420W X 300H)	\$211.20
ET05W	Stable Drinker Trough - 6Ltr - (360L X 290W X 180H)	\$96.80
ET06W	Stable Drinker Trough - 16Ltr - (450L X 400W X 230H)	\$125.40
ET07W	All Poly Stable Drinker - 7 Ltr - (300L X 300W X 250H)	\$102.30
ET08W	All Poly Stable Drinker - 15 Ltr - (380L X 380W X 280H)	\$133.10

Fence Feeders

Animal Products



ET02

- Extremely strong feed bin - ideal for bulls
- Large capacity - 50 litres
- Galvanised brackets
- Includes drain bung



ET04

- Smaller hay feeder ideal for smaller animals, ponies etc.
- Stainless steel fasteners
- Galvanised fence brackets and frame



ET03

- Generous hay compartment
- Feed bin prevents hay falling on ground
- Galvanised frame



ET03L

- Optional weather hood to suit ET03



ET09

- Rugged rectangle design
- 35 litre capacity
- Galvanised hanging brackets
- Very robust



ET13

- Corrosion proof all poly feeder
- Ideal for liquid supplements
- Proven Durability
- Rust free for long life



ET14

- 32 litre D-shape horse feeder
- Return lip around top prevents feed from being blown or dragged out
- Proven durability



ET15

- Based on same design as popular D-shape feeder
- 32 litre capacity
- Space saving design, ideal for areas where 'D' feeders won't fit

Fence Feeders

Code	Description (mm)	Retail Pricing (inc GST)
ET02	D' Fence Feeder - Large - 50Ltr - (580Lx 420W X 300H)	\$137.50
ET03	Hay Rack Fence Feeder - Large - (680L X 600W X 700H)	\$224.40
ET03L	Weather Proof Lid To Suit Large Hayrack (Et03)	\$59.40
ET04	Hay Rack Fence Feeder - Small - (550L X 400W X 600H)	\$209.00
ET09	Rectangular Fence Feeder - 35Ltr - (450L X 400W X 230H)	\$74.80
ET13	All Poly 'D' Fence Feeder - 35Ltr - (550L X 450W X 280H)	\$64.90
ET14	"D" Fence Feeder - Small - 32Ltr - (460L X 400W X 250H)	\$72.60
ET15	Corner Fence Feeder - 32Ltr - (430L X 430W X 280H)	\$72.60

Poultry Feeder

Animal Products



Poultry Feeder

Code		Description (mm)	Retail Pricing (inc GST)
PP45F		Large Poultry Feeder - 20 Ltr - (440D X 550H)	\$81.40
PP45HD		Weather Hood - Suits (PP45F)	\$42.90

Features

- Convenient feeder for poultry
- Holes reduce feed wastage
- UV stabilised to withstand the elements
- Carry handle
- Optional weatherhood to protect feed from rain

Calf & Lamb Feeders

Animal Products



MB/MBB

- Sturdy fence bracket for your milk bottle
- Galvanised finish



MB

- 2 litre capacity
- Convenient handle for ease of use
- Screw on cap and teat for easy cleaning



MM1

- 5 litre capacity
- Integrated poly fence bracket
- Screw on cap and teat



MM5

- 30 litre capacity
- Individual divisions and generous teat space, means each animal gets their share
- Galvanised mounting brackets



MM12

- Huge 70 litre capacity
- Internal partitions each holding 2 litres
- Generous teat spacing



MFT/C

- Calf Teat with Screw Cap



LT/C

- Lamb Teat with Screw Cap

Calf Feeders

Code	Description	Retail Pricing (inc GST)
MBB	Fence Bracket Only For Calf Bottle	\$24.20
MB	Single Teat Milk Bottle With Screw Cap - 2 Ltr	\$46.20
MM1	Single Teat Milk Maid With Screw On Teat - 5 Ltr	\$67.10
MM5	5 Teat Milk Maid With Screw On Teats - 30 Ltr	\$204.60
MM12	12 Teat Milk Maid With Screw On Teats - 70 Ltr	\$385.00
MFT/C	Calf Teat & Cap (Box of 10)	\$102.30

Lamb Feeders

Code	Description	Retail Pricing (inc GST)
MBB	Fence Bracket Only For Lamb Bottle	\$24.20
MBL	Single Teat Lamb Bottle With Screw Cap - 2 Ltr	\$46.20
MM1L	Single Teat Lamb Bar With Screw On Teat - 5 Ltr	\$67.10
MM5L	5 Teat Lamb Bar With Screw On Teats - 30 Ltr	\$204.60
MM12L	12 Teat Lamb Bar With Screw On Teats - 70 Ltr	\$385.00
LT/C	Lamb Teat & Cap (Box of 10)	\$93.50

The Coerco range of milk feeders have been thoroughly **tested and proven** to efficiently feed calves, lambs and kids from the first day through to weaning. A must for any livestock rearer!

Storage and Handling Products

Vehicle Accessories and Handling Products



PFB-1

- Robust poly feed bucket with 20 litre capacity
- UV stabilised
- Strong and light polyethylene to withstand the rigours of a bucket's life
- Pouring spout and handgrip in bottom of bucket for ease of pouring
- Corrosion proof for years of use
- Flat side on back for easy carrying
- Exceptionally strong design



SDD200

- Rust free poly construction
- Weather and rodent proof with removable lid
- Suitable for liquids or dry feed



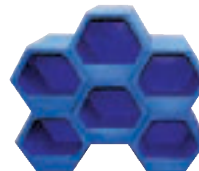
PSC-2

- Strong and durable
- Moulded handle for easy use
- Will sit flat on end and side



PSB1000

- Robust Poly Construction
- Forkliftable
- Weatherproof removable lid



HSB40

- Bolt together modules designed for easy installation and additions
- Easily accessible
- Freestanding
- Poly construction - will not rust

Storage and Handling Products

Code	Description (mm)	Retail Pricing (inc GST)
PFB-1	Poly Feed Bucket - 20 Litre	\$50.60
PSB1000	Pallet Storage Bin - 1000Ltr - (1180 X 1180 X 850)	\$95.10
SDD200	Storage Drum - 200 Litre	\$176.00
PSC-2	Poly Feed Scoop	\$28.60

Beehive Storage Cells

Code	Description (mm)	Retail Pricing (inc GST)
HSB40	Hexagonal Storage Cell - (450 x 390 x 330)	\$51.70

Poly Steps

Vehicle Accessories and Handling Products



HSP

- Special nonslip tread on every step
- All poly manufacture no steel to rust
- Wide steps for easy stepping and balance
- Sturdy construction with splayed feet for extra stability
- Built in handle for ease of moving



HSP-1

- Rust free, durable and multi-purpose step
- Great for mounting horses - no sharp edges
- Non-slip tread pattern on steps
- Available in multiple colours
- Maximum load 75kg



SCS

- Rubber Feet supplied
- Stackable
- Dual Hand Grips
- 150kg U.D.L. (certified)
- Can be Secured
- Fully Recyclable
- Weighs 4.5 Kg
- Load tested 450kg

Poly Steps

Code	Description (mm)	Retail Pricing (inc GST)
HSP	Handy Steps - (700L X 400W X 600H)	\$166.10
HSP-1	Round Multi-Purpose Step - 3 Step High - (620L x 720W x 720D)	\$148.50
SCS	SafeCrate Step Stool - (500 x 500 x 380)	\$121.00

Compact Water Transport Tanks

Vehicle Accessories and Handling Products



UT60S

- Rigid food grade polyethylene
- 20mm tap provided at the base of tank
- Breathing bung provided at top for easy filling
- Mounting kit included



UTT100

- 100 Litre capacity
- Convenient compact size
- Great for under ute trays & caravans
- Also available in diesel tank

Compact Water Transport Tanks

Code	Description (mm)	Retail Pricing (inc GST)
UTT60S	Under Tray Poly Water Tank - 60 Ltr - (600L X 390W X 390H)	\$220.00
UTT100	Under Tray Poly Water Tank - 100 Ltr - (1400L X 300W X 250H)	\$199.10
UTT130	130Ltr Poly Water Vehicle Tank - (1500L x 250W x 350H)	\$228.80

Liquid Fertiliser Storage Tanks

Fertiliser Storage



Features

- Certified design and analysis on structure
- Durable, impact resistant, UV stabilised, chemical resistant poly material
- 25mm (1") filling line drain for operator safety
- Tank level gauge for easy viewing of content volume
- 50mm (2") outlet, stainless valve and camlock supplied with tank (as standard)
- Vented access hatch and overflow
- Approved for storage by all major liquid fertiliser companies



Liquid Fertiliser Storage Tanks

Code	Description	Retail Pricing (inc GST)
LF10500-22	10,500Ltr Liquid Fertiliser Storage Tank Setup With 2" (50mm) Fill & 2" (50mm) Suction Port	\$3,539.80
LF10500-23	10,500Ltr Liquid Fertiliser Storage Tank Setup With 2" (50mm) Fill & 3" (75mm) Suction Port	\$3,727.90
LF10500-32	10,500Ltr Liquid Fertiliser Storage Tank Setup With 3" (75mm) Fill & 2" (50mm) Suction Port	\$3,842.30
LF10500-33	10,500Ltr Liquid Fertiliser Storage Tank Setup With 3" (75mm) Fill & 3" (75mm) Suction Port	\$4,006.20
LF25000-22	25,000Ltr Liquid Fertiliser Storage Tank Setup With 2" (50mm) Fill & 2" (50mm) Suction Port	\$4,736.60
LF25000-23	25,000Ltr Liquid Fertiliser Storage Tank Setup With 2" (50mm) Fill & 3" (75mm) Suction Port	\$4,923.60
LF25000-32	25,000Ltr Liquid Fertiliser Storage Tank Setup With 3" (75mm) Fill & 2" (50mm) Suction Port	\$5,033.60
LF25000-33	25,000Ltr Liquid Fertiliser Storage Tank Setup With 3" (75mm) Fill & 3" (75mm) Suction Port	\$5,190.90
LF50000-22	50,000Ltr Liquid Fertiliser Storage Tank Setup With 2" (50mm) Fill & 2" (50mm) Suction Port	\$9,472.10
LF50000-23	50,000Ltr Liquid Fertiliser Storage Tank Setup With 2" (50mm) Fill & 3" (75mm) Suction Port	\$9,729.50
LF50000-32	50,000Ltr Liquid Fertiliser Storage Tank Setup With 3" (75mm) Fill & 2" (50mm) Suction Port	\$9,842.80
LF50000-33	50,000Ltr Liquid Fertiliser Storage Tank Setup With 3" (75mm) Fill & 3" (75mm) Suction Port	\$10,005.60

Cone Based Process Tank Systems

Industrial Process Tanks



Cone Based Process Tank Systems

Code	Description	Retail Pricing (inc GST)
ITCB5000S	Stand (Galvanised) To Suit 5,000 Litre (1,110 Gallon) Chemical Industrial Storage Tank - Cone Base	\$1,234.20
ITCB5000RT	5,000 Litre (1,110 Gallon) Chemical Industrial Storage Tank (Bare) - Cone Base/Closed Roof Top	\$3,190.00
ITCB5000GT	5,000 Litre (1,110 Gallon) Chemical Industrial Storage Tank (Bare) - Cone Base/Open Gutter Top	\$3,740.00
ITCB12000S	Stand (Galvanised) To Suit 12,000 Litre (2,600 Gallon) Chemical Industrial Storage Tank - Cone Base	\$2,750.00
ITCB12000OGT	12,000 Litre (2,600 Gallon) Chemical Industrial Storage Tank (Bare) - Cone Base/Open Gutter Top	\$7,689.00

Features

Ideal for mixing or batching liquid solutions, the cone base option offers complete drainage. Great for dosing of Bio Diesel and also pre-mixing of liquid or granular chemicals before filling the spray unit.

Available with customer fittings, pipework and agitators these units can be designed to meet your own requirements.

Common uses;

- Chemical Mixing/Agitation
- Bio-diesel Processing
- Trace Element Mixing



Free Standing Liquid Fertiliser Transport Tanks

Liquid Transportation and Dust Suppression



Features

- Special 'FNS' series range manufactured for transport of liquid fertilisers and chemicals with heavier SG ratings.
- Easy to read calibrations
- Strength through ingenuity of design
- Durable, impact resistant, UV stabilised polyethylene for long life
- Stainless Steel Lid and Basket Filter
- Sight tube for easy viewing of content volume (3000 litres and larger)
- One outlet supplied with tank, quantity and sizes optional
- Spill containment lip surrounds lid on tanks larger than 200 litres
- Large range of sizes to satisfy every requirement
- Integral foam filled baffle to reduce surge and increase stability*
- Optional mounting pins available (refer page 46)
- Optional Ball Baffle System® available (refer page 45)
- All free standing tanks available with forkliftable galvanised skid.



Outside view of Pin Mount



Cutaway of Pin Mount



Cutaway showing baffle

Free Standing Liquid Fertiliser Transport Tanks

Code	Description (mm)	Retail Pricing (inc GST)
FNS2000FS	2000 Ltr Liquid Fert Free Standing Cartage Tank - (1830L X 1400W X 1130H)	\$2,267.10
FNS2000FSS	2000 Ltr Liquid Fert Free Standing Cartage Tank With Skid - (1830L X 1400W X 1280H)	\$3,529.90
FNS3000FS	3000 Ltr Liquid Fert Free Standing Cartage Tank - (2300L X 1500W X 1260H) - Non Baffled	\$3,483.70
FNS3000FSS	3000 Ltr Liquid Fert Free Standing Cartage Tank With Skid - (2300L X 1500W X 1410H) - Non Baffled	\$5,053.40
FNS5000FS	5000 Ltr Liquid Fert Free Standing Cartage Tank - (2820L X 1650W X 1700H) - Non Baffled	\$4,868.60
FNS5000FSS	5000 Ltr Liquid Fert Free Standing Cartage Tank With Skid - (2820L X 1650W X 1850H) - Non Baffled	\$6,933.30
FNS7000FS	7000 Ltr Liquid Fert Free Standing Cartage Tank - (3430L x 1850W x 1670H)	\$6,691.30
FNS7000FSS	7000 Ltr Liquid Fert Free Standing Cartage Tank With Skid - (3430L x 1850W x 1820H)	\$10,265.20
FNS10000FS	10,000 Ltr Liquid Fert Free Standing Cartage Tank - (3600L x 2100W x 1890H)	\$9,191.60
FNS10000FSS	10,000 Ltr Liquid Fert Free Standing Cartage Tank With Skid (3600L x 2100W x 2140H)	\$13,099.90
FNS12500FS	12,500 Ltr Liquid Fert Free Standing Cartage Tank - (4000L x 2200W x 2250H) - Non Baffled	\$11,534.60
FNS12500FSS	12,500 Ltr Liquid Fert Free Standing Cartage Tank With Skid - (4000L x 2200W x 2400H) - Non Baffled	\$17,934.40

*Except 3000, 5000 & 12500ltr Models

Sump Based Liquid Fertiliser Transport Tanks

Liquid Transportation and Dust Suppression



- Integrated Draining Sump
- Stainless Steel Lid and Basket Filter
- Pin Mount for Secure Fastening
- Poly Fittings for Easy Connection
- Sight Tube for Easy View of Content Volume

Features

- Special 'FNS' series range manufactured for transport of liquid fertilisers and chemicals with heavier SG ratings.
- Strength through ingenuity of design
- Durable, impact resistant, UV stabilised polyethylene for long life
- Easy to read calibrations
- Sight tube for easy view of content volume (3000 litres and larger)
- Basket filter supplied with all spray tanks
- One outlet supplied with tank, quantity and sizes optional
- Spill containment lip surrounds lid on tanks larger than 200 litres
- Large range of sizes to satisfy every requirement
- Smooth interior and integral sump model enables complete evacuation and decontamination of tank making chemical changes easier
- Available with robust galvanised steel mounting frame for protection of tank and ease of installation
- Extra optional mounting pins available (refer page 46)
- Optional Ball Baffle System® available (refer page 45)



Cutaway of spray tank showing full drain sump



Outside view of Pin Mount



Cutaway of Pin Mount

Sump Based Liquid Fertiliser Transport Tanks

Code	Description (mm)	Retail Pricing (inc GST)
FNS1500	1500 Ltr Liquid Fert Sump Drain Spray Tank - (1750L X 1250W X 1045H)	\$1,821.60
FNS1500S	1500 Ltr Liquid Fert Sump Drain Spray Tank With Skid - (1750L X 1250W X 1195H)	\$2,777.50
FNS2000	2000 Ltr Liquid Fert Sump Drain Spray Tank - (1830L X 1400W X 1130H)	\$2,313.30
FNS2000S	2000 Ltr Liquid Fert Sump Drain Spray Tank With Skid - (1830L X 1400W X 1280H)	\$3,529.90
FNS3000	3000 Ltr Liquid Fert Sump Drain Spray Tank - (2300L X 1500W X 1260H)	\$3,554.10
FNS3000S	3000 Ltr Liquid Fert Sump Drain Spray Tank With Skid - (2300L X 1500W X 1410H)	\$5,053.40
FNS5000	5000 Ltr Liquid Fert Sump Drain Spray Tank - (2820L X 1650W X 1700H)	\$4,966.50
FNS5000S	5000 Ltr Liquid Fert Sump Drain Spray Tank With Skid - (2820L X 1650W X 1850H)	\$6,933.30
FNS7000	7000 Ltr Liquid Fert Sump Drain Spray Tank - (3430L x 1850W x 1670H)	\$6,825.50
FNS7000S	7000 Ltr Liquid Fert Sump Drain Spray Tank With Skid - (3430L x 1850W x 1820H)	\$10,265.20
FNS10000	10,000 Ltr Liquid Fert Sump Drain Spray Tank - (3600L x 2100W x 1890H)	\$9,376.40
FNS10000S	10,000 Ltr Liquid Fert Sump Drain Spray Tank With Skid (3600L x 2100W x 2140H)	\$13,099.90

Free Standing Liquid Transport Tanks

Liquid Transportation and Dust Suppression

Sight tube for easy viewing of content volume



Features

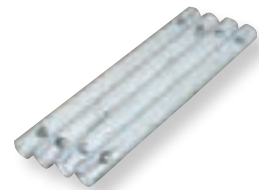
- Easy to read calibrations
- Strength through ingenuity of design
- Durable, impact resistant, UV stabilised polyethylene for long life
- Sight tube for easy viewing of content volume (3000 litres and larger)
- One outlet supplied with tank, quantity and sizes optional
- Spill containment lip surrounds lid on tanks larger than 200 litres
- Large range of sizes to satisfy every requirement
- Integral foam filled baffle to reduce surge and increase stability*
- Optional mounting pins available (refer page 46)
- Optional Ball Baffle System® available (refer page 45)
- All free standing tanks available with forkliftable galvanised skid.



- Moulded Lifting Lugs
- Vented Lid and Basket Filter
- Mounting Points Moulded into Tank
- Poly Fittings for Easy Connection



Cutaway showing Baffle



Optional Mounting Pins (refer page 10 - this section)

Free Standing Liquid Transport Tanks

Code	Description (mm)	Retail Pricing (inc GST)
ST200FS	200 Ltr Free Standing Cartage Tank - (1020L X 600W X 625H)	\$421.30
ST200FSS	200Ltr Free Standing Cartage Tank With Skid - (1020L X 600W X 725H)	\$816.20
ST400FS	400 Ltr Free Standing Cartage Tank - (1250L X 850W X 650H)	\$680.90
ST400FSS	400 Ltr Free Standing Cartage Tank With Skid - (1250L X 850W X 800H)	\$1,211.10
ST600FS	600 Ltr Free Standing Cartage Tank - (1300L X 980W X 710H)	\$750.20
ST600FSS	600 Ltr Free Standing Cartage Tank With Skid - (1300L X 980W X 860H)	\$1,311.20
ST800FS	800 Ltr Free Standing Cartage Tank - (1370L X 1100W X 860H)	\$922.90
ST800FSS	800 Ltr Free Standing Cartage Tank With Skid - (1370L X 1100W X 1010H)	\$1,509.20
ST1000FS	1000 Ltr Free Standing Cartage Tank - (1355L X 1210W X 960H)	\$1,023.00
ST1000FSS	1000 Ltr Free Standing Cartage Tank With Skid - (1355L X 1210W X 1110H)	\$1,745.70
ST1500FS	1500 Ltr Free Standing Cartage Tank - (1750L X 1250W X 1045H)	\$1,402.50
ST1500FSS	1500 Ltr Free Standing Cartage Tank With Skid - (1750L X 1250W X 1195H)	\$2,391.40

*Except 3000, 5000, 12500 & 15000ltr Models



ST200FS



ST400FS



ST600FS



ST800FS



ST1000FS



ST1500FS



ST2000FS



ST3000FS



ST5000FS



ST7000FS



ST10000FS



ST12500FS



ST15000FS

Free Standing Liquid Transport Tanks

Code	Description (mm)	Retail Pricing (inc GST)
ST2000FS	2000 Ltr Free Standing Cartage Tank - (1830L X 1400W X 1130H)	\$1,783.10
ST2000FSS	2000 Ltr Free Standing Cartage Tank With Skid - (1830L X 1400W X 1280H)	\$3,001.90
ST3000FS	3000 Ltr Free Standing Cartage Tank - (2300L X 1500W X 1260H) - Non Baffled	\$2,712.60
ST3000FSS	3000 Ltr Free Standing Cartage Tank With Skid - (2300L X 1500W X 1410H) - Non Baffled	\$4,210.80
ST5000FS	5000 Ltr Free Standing Cartage Tank - (2820L X 1650W X 1700H) - Non Baffled	\$3,811.50
ST5000FSS	5000 Ltr Free Standing Cartage Tank With Skid - (2820L X 1650W X 1850H) - Non Baffled	\$5,780.50
ST7000FS	7000 Ltr Free Standing Cartage Tank - (3430L x 1850W x 1670H)	\$5,171.10
ST7000FSS	7000 Ltr Free Standing Cartage Tank With Skid - (3430L x 1850W x 1820H)	\$8,611.90
ST10000FS	10,000 Ltr Free Standing Cartage Tank - (3600L x 2100W x 1890H)	\$8,072.90
ST10000FSS	10,000 Ltr Free Standing Cartage Tank With Skid (3600L x 2100W x 2140H)	\$11,796.40
ST12500FS	12,500 Ltr Free Standing Cartage Tank - (4000L x 2200W x 2250H) - Non Baffled	\$9,930.80
ST12500FSS	12,500 Ltr Free Standing Cartage Tank With Skid - (4000L x 2200W x 2400H) - Non Baffled	\$16,330.60
ST15000FS	15,000 Ltr Free Standing Cartage Tank - (4000L X 2350W X 2215H) - Non Baffled	POA
ST15000FSS	15,000 Ltr Free Standing Cartage Tank With Skid (4000L X 2350W X 2465H) - Non Baffled	POA

Sump Based Liquid Transport Tanks

Liquid Transportation and Dust Suppression



- Integrated Draining Sump
- Vented Lid and Basket Filter
- Pin Mount for Secure Fastening
- Poly Fittings for Easy Connection
- Sight Tube for Easy View of Content Volume

Features

- Strength through ingenuity of design
- Durable, impact resistant, UV stabilised polyethylene for long life
- Easy to read calibrations
- Sight tube for easy view of content volume (3000 litres and larger)
- Basket filter supplied with all spray tanks
- One outlet supplied with tank, quantity and sizes optional
- Spill containment lip surrounds lid on tanks larger than 200 litres
- Large range of sizes to satisfy every requirement
- Smooth interior and integral sump model enables complete evacuation and decontamination of tank making chemical changes easier
- Available with robust hot dip galvanised steel mounting frame for protection of tank and ease of installation
- Extra optional mounting pins available (refer page 46)
- Optional Ball Baffle System® available (refer page 45)



Cutaway of spray tank showing full drain sump



Outside view of Pin Mount



Cutaway of Pin Mount





ST3000S



ST600S



ST200S

Optional Colours Available:

Yellow Green Blue
Red Faint-Green

(Optional colours may incur surcharge)

Sump Based Liquid Transport Tanks

Code	Description (mm)	Retail Pricing (inc GST)
ST200	200 Ltr Sump Drain Spray Tank - (1020L X 600W X 625H)	\$424.60
ST200S	200Ltr Sump Drain Spray Tank With Skid - (1020L X 600W X 725H)	\$819.50
ST400	400 Ltr Sump Drain Spray Tank - (1250L X 850W X 650H)	\$713.90
ST400S	400 Ltr Sump Drain Spray Tank With Skid - (1250L X 850W X 800H)	\$1,245.20
ST600	600 Ltr Sump Drain Spray Tank - (1300L X 980W X 710H)	\$821.70
ST600S	600 Ltr Sump Drain Spray Tank With Skid - (1300L X 980W X 860H)	\$1,382.70
ST800	800 Ltr Sump Drain Spray Tank - (1370L X 1100W X 860H)	\$1,019.70
ST800S	800 Ltr Sump Drain Spray Tank With Skid - (1370L X 1100W X 1010H)	\$1,606.00
ST1000	1000 Ltr Sump Drain Spray Tank - (1355L X 1210W X 960H)	\$1,107.70
ST1000S	1000 Ltr Sump Drain Spray Tank With Skid - (1355L X 1210W X 1110H)	\$1,830.40
ST1500	1500 Ltr Sump Drain Spray Tank - (1750L X 1250W X 1045H)	\$1,518.00
ST1500S	1500 Ltr Sump Drain Spray Tank With Skid - (1750L X 1250W X 1195H)	\$2,505.80
ST2000	2000 Ltr Sump Drain Spray Tank - (1830L X 1400W X 1130H)	\$1,927.20
ST2000S	2000 Ltr Sump Drain Spray Tank With Skid - (1830L X 1400W X 1280H)	\$3,146.00
ST3000	3000 Ltr Sump Drain Spray Tank - (2300L X 1500W X 1260H)	\$2,960.10
ST3000S	3000 Ltr Sump Drain Spray Tank With Skid - (2300L X 1500W X 1410H)	\$4,458.30
ST5000	5000 Ltr Sump Drain Spray Tank - (2820L X 1650W X 1700H)	\$4,136.00
ST5000S	5000 Ltr Sump Drain Spray Tank With Skid - (2820L X 1650W X 1850H)	\$6,103.90
ST7000	7000 Ltr Sump Drain Spray Tank - (3430L X 1850W X 1670H)	\$5,526.40
ST7000S	7000 Ltr Sump Drain Spray Tank With Skid - (3430L X 1850W X 1820H)	\$8,966.10
ST10000	10,000 Ltr Sump Drain Spray Tank - (3600L X 2100W X 1890H)	\$8,531.60
ST10000S	10,000 Ltr Sump Drain Spray Tank With Skid (3600L X 2100W X 2140H)	\$12,254.00



Heavy Duty Skid Mounted Liquid Transport Units

Liquid Transportation and Dust Suppression

Features

- Robust Galvanised skidmount frame
- Forklift access for manoeuvrability
- Sturdy lash down points on frame for secure transport
- High grade powdercoat finish on all safety rail work
- 3600 swivelling hose reel with lock (to prevent accidental unwinding) for washdown applications etc.
- Unique stow-away, ground access ladder for hose reel/pump operation
- Lid access ladder and hand rails for safe filling operation
- 1½" pressure firefighter pump for hose reel supply
- 3" transfer pump with camlock fittings for easy use
- Both pump units can be used for filling, transfer etc. simultaneously



Heavy Duty Skid Mounted Liquid Transport Units

Code	Description (mm)	Retail Pricing (inc GST)
MT-ST7000SK	7000 Ltr Bare Tank And Heavy Duty Galvanised Skid Unit	POA
MT-ST7000SKP	7000 Ltr Skidmount Liquid Cartage Unit Complete	POA
MT-ST10000SK	10,000 Ltr Bare Tank And Heavy Duty Galvanised Skid Unit	POA
MT-ST10000SKP	10,000 Ltr Skidmount Liquid Cartage Unit Complete	POA
MT-FRC/S	Hose Reel Stand To Suit Heavy Duty Skids	\$1,518.00
MT-GAL	Ground Access Ladder To Suit Heavy Duty Skids	\$1,392.60
MT-HAL	Hatch Access Ladder To Suit Heavy Duty Skids	2,887.50
MT-PSR	Platform Safety Rail Kit To Suit Heavy Duty Skids	2,481.60

Options

- Tank and pumps suitable for liquid chemicals
- Both ladder models available on either side of unit
- Ground access ladder available at front of unit
- Pump sizes and setup (transfer and/or pressure)
- 25mm Hose Reel/s
- Spreader spray bars for water binding, dust suppression etc.
- Ball Baffle System® (refer page 43)



5000ltr Skidmount Unit with water cannon setup



Liquid Transport and Dust Suppression Accessories

Liquid Transportation and Dust Suppression



Features

- Reduces fluid movement for improved load stability during transit
- Suitable for use with all tanks - steel, poly, fibreglass, etc.
- Food grade quality material - suitable for potable water
- Can be used with water, diesel and other liquids
- No rust, lightweight & durable
- Low liquid displacement
- Simple to install
- Recommended use quantity:
 - 355mm is 1 ball baffle per 40 litres of tank capacity
 - 195mm is 1 ball baffle per 7 litres of tank capacity
- Ball Baffles are supplied in two halves and require clipping together and inserting through the lid into tank.

Liquid Transfer Equipment and Accessories

Code	Description (mm)	Retail Pricing (inc GST)
SBB195	Small Baffle Ball - 195mm	\$7.70
SBB355	Large Baffle Ball - 355mm	\$9.90



Tested and approved in Australia by Loadsaf Australia. Complies with load restraint guide performance standards.

Tested and approved in Australia by Loadsaf Australia.

Complies with load restraint guide performance standards



Improves tanker stability in rough terrain



STABILITY - Don't try this without Ball Baffles!



BRAKING - Independent testing shows 46% improvement in braking

Slalom testing shows remarkable increase in vehicle stability with 2/3 full water tank fitted with Ball Baffle System®

Liquid Transport and Dust Suppression Accessories

Liquid Transportation and Dust Suppression

255mm



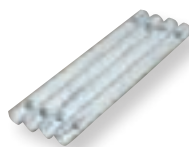
355mm



455mm



Mounting Pins



- Optional mounting pins
- Available to suit all sizes of Coerco liquid cartage tanks
- Fully galvanised - no rusting!

Spray Tank Lids & Basket Filters

Code	Description (mm)	Retail Pricing (inc GST)
COMP-33-04	255mm Basket Filter	\$39.60
COMP-33-07	355mm Basket Filter	\$52.80
COMP-33-09	455mm Basket Filter	\$64.90
COMP-33-01	255mm Screw Lid, Rim and Seal	\$47.30
COMP-33-05	355mm Screw Lid, Rim and Seal	\$63.80
COMP-33-11	455mm Screw Lid, Rim and Seal	\$94.60
COMP-33-06	355mm Hinged Lid, Rim and Seal	\$63.80
COMP-33-08	455mm Hinged Lid, Rim and Seal	\$94.60

Mounting Pins

Code	Description (mm)	Retail Pricing (inc GST)
STA-20-1	Set of (4x PART-05-01) Mounting Pins to suit 200Ltr Cartage Tank	\$38.50
STA-20-2	Set of (4x PART-05-02) Mounting Pins to suit 400 & 600Ltr Cartage Tanks	\$47.30
STA-25	Set of (4x PART-05-03) Mounting Pins to suit 800-5000Ltr Cartage Tanks	\$53.90
STA-38	Set of (4x PART-05-04) Mounting Pins to suit 7000Ltr Cartage Tank	\$77.00
STA-47	Set of (4x PART-05-05) Mounting Pins to suit 10,000Ltr Cartage Tank	\$90.20
STA-38-2	Set of (8x PART-05-04) Mounting Pins to suit 12,500Ltr Cartage Tank	\$154.00

Chemical Bucket



- Robust 20 litre calibrated chemical bucket with hand grip in base
- Easy pouring spout

Poly Chemical Bucket

Code	Description	Retail Pricing (inc GST)
STA-01	Poly Chemical Bucket - 20 Ltr	\$50.60

Poly Tank Fittings



- Available in 6 sizes
- Manufactured from UV Stabilised Glass Fibre Reinforced Nylon giving a weather, termite, fungi and bacterial resistance

Tank Fittings

Code	Description (mm)	Retail Pricing (inc GST)
COMP-19-02	25mm (1") Poly Fitting	\$11.00
COMP-19-03	32mm (1 1/4") Poly Fitting	\$18.70
COMP-19-04	40mm (1 1/2") Poly Fitting	\$23.10
COMP-19-05	50mm (2") Poly Fitting	\$27.50
COMP-19-06	80mm (3") Poly Fitting	\$96.80
COMP-19-07	100mm (4") Poly Fitting	\$129.80
COMP-01-01	25mm (1") Brass Fitting	\$33.00
COMP-01-02	32mm (1 1/4") Brass Fitting	\$36.30
COMP-01-03	40mm (1 1/2") Brass Fitting	\$37.40
COMP-01-04	50mm (2") Brass Fitting	\$47.30
COMP-01-05	80mm (3") Brass Fitting	\$139.70
COMP-01-06	100mm (4") Brass Fitting	\$243.10

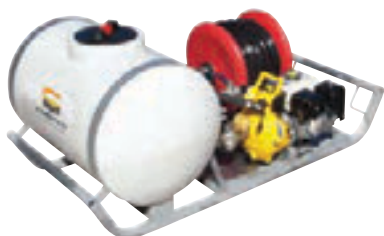
Brass Tank Fittings



- Brass tank fittings have internal & external threads (25-50mm)
- Locking nut is left hand thread for secure fit. Doesn't come loose when fitting valves etc

Skid Mount Fire Fighter Units

Fire Fighting Equipment



FF200C



FF400C



FF1500C

Features

- Durable UV Stabilised Polyethylene Tank
- Strong Hot Dip Galvanised Steel Frame with easy lifting & tie down points - always ready for action
- 19mm Poly Hose Reel - Complete With Firefighting Adjustable Nozzle and Hose Reel Lock (to prevent accidental unwinding)
- 40mm Camlock Quick Connection Fittings
- Suction hose with non return foot valve
- Reliable 5.5hp Honda Engine Powered Firefighter Pump (Other Models Available)

Skid Mount Fire Fighter Units

Code	Description (mm)	Retail Pricing (inc GST)
FF200C	200 Ltr Skid Mounted Firefighter - (1500L X 600W X 650H)	\$2,538.80
FF400C	400 Ltr Skid Mounted Firefighter - (1750L X 1250W X 700H)	\$3,418.80
FF600C	600 Ltr Skid Mounted Firefighter - (1800L X 1300W X 800H)	\$3,786.20
FF800C	800 Ltr Skid Mounted Firefighter - (1950L X 1400W X 850H)	\$3,944.60
FF1000C	1000 Ltr Skid Mounted Firefighter - (2050L X 1400W X 1050H)	\$4,023.80
FF1500C	1500 Ltr Skid Mounted Firefighter - (2600L X 1250W X 1050H)	\$4,485.80
FF2000C	2000 Ltr Skid Mounted Firefighter - (2850L X 1350W X 1150H)	\$4,931.30

Options

- 25mm Hose reel
- Diesel powered pump
- High pressure twin impeller pump
- Ball Baffle System® (refer page 9 - Liquid Transport & Dust Suppression Section)



Compact Fire Fighter Units

Fire Fighting Equipment



FF430



FFCH600



FFCH1000

Features

- Durable UV Stabilised Polyethylene Tank
- Strong Hot Dip Galvanised Steel Frame with easy lifting & tie down points - always ready for action
- 19mm Poly Hose Reel - Complete With Firefighting Adjustable Nozzle and Hose Reel Lock (to prevent accidental unwinding) - Except FF430
- 40mm Camlock Quick Connection Fittings
- Suction hose with non return foot valve
- Reliable 5.5hp Honda Engine Powered Firefighter Pump (Other Models Available)

Compact Fire Fighter Units

Code	Description (mm)	Retail Pricing (inc GST)
FF430	430 Ltr Bushranger Firefighter - (1650L X 620W X 800H)	\$2,090.00
FFCH600	600 Ltr Compact Firefighter - (1600L X 1100W X 1000H)	\$3,489.20
FFCH1000	1000 Ltr Compact Firefighter - (1700L X 1250W X 1100H)	\$3,749.90

Options

- 25mm Hose reel
- Diesel powered pump
- High pressure twin impeller pump
- Ball Baffle System® (refer page 43)



Trailed Fire Fighting Equipment

Fire Fighting Equipment

Trailers shown with optional extras



MT-FF1000T



MT-FF1500TT

Features

- Designed and manufactured for easy operation
- Durable UV stabilised polyethylene baffled tank
- Galvanised chassis frame
- Mudguards
- Mudflaps
- Heavy duty pivot jockey wheel
- ADR (Australian Design Rules) compliant Brake Systems
- Landcruiser stud pattern rims
- Reliable 5.5HP Honda engine Powered Firefighter Pump (different models available)
- 40mm camlock quick connection fittings
- 19mm poly hose reel - complete with hose reel lock (to prevent accidental unwinding)
- Suction hose with non return foot valve

Trailed Fire Fighting Equipment

Code	Description (mm)	Retail Pricing (inc GST)
MT-FF600T	600 Ltr Industrial Single Axle Firefighter Trailer Unit - Includes Tank, Petrol Pump & 20mm Hose Reel On Rolling Chassis/Unlicensed	\$9,887.90
MT-FF800T	800 Ltr Industrial Single Axle Firefighter Trailer Unit - Includes Tank, Petrol Pump & 20mm Hose Reel On Rolling Chassis/Unlicensed	\$10,061.70
MT-FF1000T	1000 Ltr Industrial Single Axle Firefighter Trailer Unit - Includes Tank, Petrol Pump & 20mm Hose Reel On Rolling Chassis/Unlicensed	\$10,165.10
MT-FF1000TT	1000 Ltr Industrial Tandem Axle Firefighter Trailer Unit - Includes Tank, Petrol Pump & 20mm Hose Reel On Rolling Chassis/Unlicensed	\$12,468.50
MT-FF1500TT	1500 Ltr Industrial Tandem Axle Firefighter Trailer Unit - Includes Tank, Petrol Pump & 20mm Hose Reel On Rolling Chassis/Unlicensed	\$13,053.70
MT-FF2000TT	2000 Ltr Industrial Tandem Axle Firefighter Trailer Unit - Includes Tank, Petrol Pump & 20mm Hose Reel On Rolling Chassis/Unlicensed	\$16,475.80

Options

- High quality powdercoat finish on mudguards
- Indicator lamp kit
- License inspection and registration
- High pressure twin impeller pump
- 25mm fire hose reel
- Diesel powered pump
- Tool/storage box
- Twin Hose Reels
- Spare Tyre Carrier
- Fire extinguisher
- Ball Baffle System® (refer page 9 - Liquid Transport & Dust Suppression Section)

Fire Fighting Equipment

Fire Fighting Equipment



PPK25

Features

Portable Pump Unit suitable for:

- Water Transfer
- Fire Fighting
- Washdown Applications

Portable Firefighter Pump Units

Code	Description (mm)	Retail Pricing (inc GST)
PPK20	Skid Mounted Firefighter Pump Unit - 20mm Hose Reel	\$2,319.90
PPK25	Skid Mounted Firefighter Pump Unit - 25mm Hose Reel	\$2,366.10



Poly Firefighter Hose Reels

Code	Description (mm)	Retail Pricing (inc GST)
FRC20	Fire Hose Reel - 20mm Hose @ 36 Mtr	\$554.40
FRC25	Fire Hose Reel - 25mm Hose @ 30 Mtr	\$587.40
FRXH20	Fire Hose Reel - Excluding Hose - To Suit 20mm Hose	\$420.20
FRXH25	Fire Hose Reel - Excluding Hose - To Suit 25mm Hose	\$425.70

Features

- Poly Hose reel and base - no rust hot dip galvanised spindle
- Available in 19mm & 25mm configurations
- Hose reel lock - to prevent accidental unwinding
- Quality firefighter spray nozzle

Trailed Diesel Transport Equipment

Diesel Transport Products



Shown with optional extras



Features

- Purpose built for easy operation and smooth towing
- Landcruiser stud pattern hubs with spring suspension
- Durable tank manufactured with a specialised grade polyethylene formulated for use in diesel tanks
- Galvanised chassis frame
- Custom mudflaps
- Heavy duty pivot jockey wheel
- UV stabilised for long life
- ADR (Australian Design Rules) compliant Brake Systems

Options

- Fully Bunded Chassis
- High quality powdercoat finish on mudguards
- Indicator lamp kit
- License Inspection and registration
- Tool/storage box
- Delivery hose reel
- Diesel transfer pump kits (refer to page 4 - this section)
- Spare Tyre Carrier
- Fire extinguisher
- Ball Baffle System® (refer page 9 - Liquid Transport & Dust Suppression Section)

Trailed Diesel Transport Equipment

Code	Description (mm)	Retail Pricing (inc GST)
MT-DT600T	600 Ltr Industrial Single Axle Diesel Trailer Unit - Includes Tank On Rolling Chassis Only/Unlicensed	\$5,824.50
MT-DT800T	800 Ltr Industrial Single Axle Diesel Trailer Unit - Includes Tank On Rolling Chassis Only/Unlicensed	\$7,806.70
MT-DT1000T	1000 Ltr Industrial Single Axle Diesel Trailer Unit - Includes Tank On Rolling Chassis Only/Unlicensed	\$9,785.60
MT-DT1000TT	1000 Ltr Industrial Tandem Axle Diesel Trailer Unit - Includes Tank On Rolling Chassis Only/Unlicensed	\$11,935.00
MT-DT1500TT	1500 Ltr Industrial Tandem Axle Diesel Trailer Unit - Includes Tank On Rolling Chassis Only/Unlicensed	\$12,609.30
MT-DT2000TT	2000 Ltr Industrial Tandem Axle Diesel Trailer Unit - Includes Tank On Rolling Chassis Only/Unlicensed	\$15,098.60



Free Standing Diesel Transport Tanks

Diesel Transport Products

Features

- Baffled for vastly improved vehicle stability
- Flat based to allow transport flexibility
- Special grade polyethylene for diesel - coloured to denote "Diesel Only"
- UV stabilised for long outdoor life
- Mounting pins available (refer page 46)
- Optional Ball Baffle System® available (refer page 45)
- All models available with forkliftable galvanised mounting skid
- 2" filler hole with cap, 2" drum pump access fitting and splash resistant vent
- Calibrated for easy checking of content volume with optional sight tube available



DT600FS

Free Standing Diesel Transport Tanks

Code	Description (mm)	Retail Pricing (inc GST)
DT200FS	200 Ltr Baffled Free Standing Diesel Transport Tank - (1020L X 600W X 625H)	\$511.50
DT200FSS	200Ltr Baffled Free Standing Diesel Transport Tank With Skid - (1020L X 600W X 725H)	\$906.40
DT400FS	400 Ltr Baffled Free Standing Diesel Transport Tank - (1250L X 850W X 650H)	\$820.60
DT400FSS	400 Ltr Baffled Free Standing Diesel Transport Tank With Skid - (1250L X 850W X 800H)	\$1,351.90
DT600FS	600 Ltr Baffled Free Standing Diesel Transport Tank - (1300L X 980W X 710H)	\$942.70
DT600FSS	600 Ltr Baffled Free Standing Diesel Transport Tank With Skid - (1300L X 980W X 860H)	\$1,503.70
DT800FS	800 Ltr Baffled Free Standing Diesel Transport Tank - (1370L X 1100W X 860H)	\$1,191.30
DT800FSS	800 Ltr Baffled Free Standing Diesel Transport Tank With Skid - (1370L X 1100W X 1010H)	\$1,777.60
DT1000FS	1000 Ltr Baffled Free Standing Diesel Transport Tank - (1355L X 1210W X 960H)	\$1,313.40
DT1000FSS	1000 Ltr Baffled Free Standing Diesel Transport Tank With Skid - (1355L X 1210W X 1110H)	\$2,036.10
DT1500FS	1500 Ltr Baffled Free Standing Diesel Transport Tank - (1750L X 1250W X 1045H)	\$1,753.40
DT1500FSS	1500 Ltr Baffled Free Standing Diesel Transport Tank With Skid - (1750L X 1250W X 1195H)	\$2,740.10
DT2000FS	2000 Ltr Baffled Free Standing Diesel Transport Tank - (1830L X 1400W X 1130H)	\$2,193.40
DT2000FSS	2000 Ltr Baffled Free Standing Diesel Transport Tank With Skid - (1830L X 1400W X 1280H)	\$3,411.10
DT3000FS	3000 Ltr Baffled Free Standing Diesel Transport Tank - (2300L X 1500W X 1260H) - With Baffle Balls	\$4,968.70
DT3000FSS	3000 Ltr Baffled Free Standing Diesel Transport Tank With Skid - (2300L X 1500W X 1410H) - With Baffle Balls	\$6,468.00
DT5000FS	5000 Ltr Baffled Free Standing Diesel Transport Tank - (2820L X 1650W X 1700H) - With Baffle Balls	\$7,147.80
DT5000FSS	5000 Ltr Baffled Free Standing Diesel Transport Tank With Skid - (2820L X 1650W X 1850H) - With Baffle Balls	\$9,116.80
DT7000FS	7000 Ltr Baffled Free Standing Diesel Transport Tank - (3430L X 1850W X 1670H)	\$9,743.80
DT7000FSS	7000 Ltr Baffled Free Standing Diesel Transport Tank With Skid - (3430L X 1850W X 1820H)	\$13,183.50
DT10000FS	10,000 Ltr Baffled Free Standing Diesel Transport Tank - (3600L X 2100W X 1890H)	\$15,017.20
DT10000FSS	10,000 Ltr Baffled Free Standing Diesel Transport Tank With Skid (3600L X 2100W X 2140H)	\$18,740.70

Sump Base Diesel Transport Tanks

Diesel Transport Products

Features

- Convenient range of sizes to satisfy most requirements
- Strong, durable yet lightweight tanks with robust Galvanised steel skid frame to withstand most demanding conditions of use
- Integral draining sump with 3/4" drain plug to allow complete evacuation of contents
- 2" filler hole with cap, 2" drum pump access fitting and splash resistant vent
- Calibrated for easy checking of content volume with optional sight tube available
- Mounting pins available (refer page 46)
- Optional Ball Baffle System* available (refer page 45)



DT400S

Sump Base Diesel Transport Tanks

Code	Description (mm)	Retail Pricing (inc GST)
DT200	200 Ltr Sump Drain Diesel Transport Tank - (1020L X 600W X 625H)	\$511.50
DT200S	200Ltr Sump Drain Diesel Transport Tank With Skid - (1020L X 600W X 725H)	\$722.70
DT400	400 Ltr Sump Drain Diesel Transport Tank - (1250L X 850W X 650H)	\$820.60
DT400S	400 Ltr Sump Drain Diesel Transport Tank With Skid - (1250L X 850W X 800H)	\$1,203.40
DT600	600 Ltr Sump Drain Diesel Transport Tank - (1300L X 980W X 710H)	\$942.70
DT600S	600 Ltr Sump Drain Diesel Transport Tank With Skid - (1300L X 980W X 860H)	\$1,334.30
DT800	800 Ltr Sump Drain Diesel Transport Tank - (1370L X 1100W X 860H)	\$1,191.30
DT800S	800 Ltr Sump Drain Diesel Transport Tank With Skid - (1370L X 1100W X 1010H)	\$1,675.30
DT1000	1000 Ltr Sump Drain Diesel Transport Tank - (1355L X 1210W X 960H)	\$1,313.40
DT1000S	1000 Ltr Sump Drain Diesel Transport Tank With Skid - (1355L X 1210W X 1110H)	\$1,811.70
DT1500	1500 Ltr Sump Drain Diesel Transport Tank - (1750L X 1250W X 1045H)	\$1,753.40
DT1500S	1500 Ltr Sump Drain Diesel Transport Tank With Skid - (1750L X 1250W X 1195H)	\$2,620.20
DT2000	2000 Ltr Sump Drain Diesel Transport Tank - (1830L X 1400W X 1130H)	\$2,193.40
DT2000S	2000 Ltr Sump Drain Diesel Transport Tank With Skid - (1830L X 1400W X 1280H)	\$3,280.20



Diesel Transfer Products

Diesel Transport Products

Features

Diesel Pump Kits for refuelling operations from drums, tanks or mobile refuelling carts. Robust proven pump kits for diesel refuelling operations. Designed to give effortless refuelling for agriculture, transport, earthmoving, mining, logging and marine industries.

Diesel Transfer Products

Code	Description	Retail Pricing (inc GST)
MT-12AHF	12 Volt Hi-Flo Pump Kit With Auto Shut-Off Nozzle - 85Lpm Kit	\$1,080.20
MT-12A45K	12 Volt Pump Kit With Auto Shut-Off Nozzle - 45Lpm	\$617.10
MT-12A60K	12 Volt Pump Kit With Auto Shut-Off Nozzle - 60Lpm	\$787.60
MT-FM4	1" Bsp Port 4 Digit Flow Meter, Manual.	\$237.60
MT-FMD	1" Bsp Electronic Inline Digital Flow Meter For Diesel	\$382.80
MT-DHA25	25mm Auto Rewind Diesel Hosereel	\$1,369.50
MT-DHM25	25mm Manual Rewind Diesel Hosereel	\$896.50
MT-ASN25	1" Auto Shut-off Nozzle	\$181.50



MT-12AHF

- 85 L/min open flow
- 12 volt DC/35 amp pump
- 4 metre battery cable with alligator clips
- Easy to use volumetric self priming
- 1" BSP female ports
- 4 metres of 25mm diesel delivery hose
- Auto Shutoff Nozzle with swivel



MT-12A45K

- 45L/min open flow
- 4 metres of 20mm anti-static delivery hose with anti-kink spring + auto shut-off nozzle
- 4 metres of power cable
- 2 metres of 20mm suction hose
- On/off switch on pump



MT-12A60K

- 60L/min open flow
- 4 metres of 25mm anti-static delivery hose with anti-kink spring + auto shut-off nozzle
- 4 metres of power cable
- 2 metres of 25mm suction hose
- Easy clean suction strainer



MT-FM4

- 1" BSP port 4 digit flow meter with flow range from 20 - 120 LPM.
- 4 digit resettable totaliser. 8 digit non resettable cumulative total.
- For use with diesel fuel in pump or gravity applications.



MT-FMD

- 1" BSP electronic inline turbine meter with compact display ideal for fitting at fuel nozzles.
- Flow range 10-120 LPM maximum, Working Pressure 300 PSI. Accuracy $\pm 1\%$.



MT-DHM25

- Hand rewind hose reel
- Entry level model for contractors
- Capacity 10m x 25mm hose,
- Powdercoated steel construction



MT-DHA25

- Hose reel with 15m x 25mm hose. 1" BSP inlet/outlet. Air/Water/Diesel.
- 300 PSI Working Pressure.



MT-ASN25

Self Contained Diesel Transport Tanks

Diesel Transport Products



DMP200



DMP400



DMP450



DMP600



DMP800



DMP1000

Features

- Models to fit all ute trays
- Pump cover to protect pump and fittings from weather and damage
- Transfer pump includes 45LPM pump, vented filler cap, 4m fuel hose, electrical leads and clamps plus trigger nozzle
- Lightweight and compact units - saves tray space and allows easy on/off loading
- Automatic trigger nozzle as standard



Self Contained Diesel Transport Tanks

Code	Description (mm)	Retail Pricing (inc GST)
DMP200	200 Ltr Self Contained Diesel Unit - With 12 Volt Pump And Nozzle - (1020L X 790W X 680H)	\$991.10
DMP400	400 Ltr Self Contained Diesel Unit - With 12 Volt Pump And Nozzle - (1650L X 790W X 680H)	\$1,199.00
DMP450	450 Ltr Self Contained Diesel Unit - With 12 Volt Pump And Nozzle - (1700L X 880W X 620H)	\$1,348.60
DMP600	600 Ltr Self Contained Diesel Unit - With 12 Volt Pump And Nozzle - (1700L X 900W X 760H)	\$1,564.20
DMP800	800 Ltr Self Contained Diesel Unit - With 12 Volt Pump And Nozzle - (1730L X 1075W X 860H) - With Baffle Balls	\$1,997.60
DMP1000	1000 Ltr Self Contained Diesel Unit - With 12 Volt Pump And Nozzle - (1730L X 1050W X 1030H) - With Baffle Balls	\$2,141.70

Safety Information

- For use with diesel only.
- Tank must be secured to vehicle and safe working practice observed.
- Some fuel distributors have specific filling requirements - check with your supplier before ordering.
- Coerco is not liable for any damage or loss through improper use of this equipment.

Trailer Equipment Accessories

Trailer Equipment Accessories



MT-FE9



MT-ILK



MT-SRK



MT-SW



MT-TB



MT-WCK

Features

There is a range of optional extras available for your Coerco trailer as required including licensing, spare wheel carriers, indicator lamp kits and accessories for safety compliance requirements.

Trailer Equipment Accessories

Code	Description	Retail Pricing (inc GST)
MT-FAK	First Aid Kit	\$96.80
MT-FE9	Fire Extinguisher & Mount Bracket - 9Kg	\$597.30
MT-ILK	Indicator Lamp Kit (Required If Licensing)	\$508.20
MT-LICP	License Inspection Compliance Plate (Required If Licensing)	\$173.80
MT-REG06	License Registration - 6 Months (Optional)	\$452.10
MT-REG12	License Registration - 12 Months (Optional)	\$750.20
MT-RM	Reflective Markings Tape -75Mm X 1Mtr	\$222.20
MT-SRK	Spill Response Kit Including Storage Box	\$655.60
MT-ST	Spare Wheel Carrier Only	\$501.60
MT-SW	Spare Wheel & Carrier	\$533.50
MT-TB	Heavy Duty Steel Tool Box	\$704.00
MT-WCK	Poly Wheel Chock (set x 2)	\$343.20

Self Contained AdBlue Cartage Tank

AdBlue Storage and Cartage



Features

- Fully enclosed lockable pump compartment for security and protection
- AdBlue® compatible pump and nozzle for easy dispensing
- 4 metres of 19mm flexible delivery hose
- Secure lockable lid provision
- 4 metres of electrical cable with battery clips
- Tank manufactured from AdBlue® compatible polyethylene
- 40mm sealed filling port
- 25mm breather vent located behind lid

Self Contained AdBlue Cartage Tank

Code	Description (mm)	Retail Pricing (inc GST)
ADP200	200 Ltr Self Contained Adblue Unit - With 12 Volt Pump And Nozzle - (1020L x 790W x 680H)	\$1,760.00
ADP400	400 Ltr Self Contained Adblue Unit - With 12 Volt Pump And Nozzle - (1650L x 790W x 680H)	\$2,039.40
ADP450	450 Ltr Self Contained Adblue Unit - With 12 Volt Pump And Nozzle - (1700L x 880W x 620H)	\$2,094.40
ADP600	600 Ltr Self Contained Adblue Unit - With 12 Volt Pump And Nozzle - (1700L x 900W x 760H)	\$2,165.90
ADP800	800 Ltr Self Contained Adblue Unit - With 12 Volt Pump And Nozzle - (1730L x 1075W x 860H) - With Baffle Balls	\$2,563.00
ADP1000	1000 Ltr Self Contained Adblue Unit - With 12 Volt Pump And Nozzle - (1730L x 1050W x 1030H) - With Baffle Balls	\$2,707.10



AdBlue®



AdBlue Storage

AdBlue Storage and Cartage



Features

- Tested and Certified for
- Adblue® Storage
- 3 sizes to choose from to suit your needs
- Weather-proof Dispensing Cabinet with lockable Door

Optional Extras

- Nozzle Holder & Stainless
- Steel Auto Shut Off Nozzle
- 4 Metre of 19mm (¾") Hose
- 240 Volt Premium AdBlue Transfer Pump
- Flow metre & Level Indicator
- Camlock Fill Point

AdBlue Storage

Code	Description	Retail Pricing (inc GST)
ABT5300	5300Ltr Adblue Storage Tank	\$2,750.00
ABT10500	10500Ltr Adblue Storage Tank	\$3,740.00
ABT25000	25,000Ltr Adblue Storage Tank	\$4,508.90



Aquaculture Tub and Base

Aquaculture Products



AT250



AT500



AT1000



AT1000T



AT1500



AT2000



AT3000



AT5000



AT9000



AT10000



Simple Drainage System



Tub being lowered onto base
(Pipework not included)



Tub and base showing drain
pipe in place
(Pipework not included)



Centre pipe riser option
inside tub
(Pipework not included)

Features

These poly aquaculture tanks are all made from food grade virgin poly with smooth internal surfaces - no loose fibres or harmful substances for either your children, fish or the farmer.

They are light weight and resilient and easily relocated.

- Swimming Pools
- Live Fish Transport Tanks
- Algae Growth Tanks
- Dosing Tanks
- Tubs and Buckets
- Some Sizes Available with Sloping Base and Support Stand

Aquaculture Tubs

Code	Description (mm)	Retail Pricing (inc GST)
AT250	Poly Aquaculture Tub - 250 Ltr - (1000D X 450H)	\$221.10
AT500	Poly Aquaculture Tub - 500 Ltr - (1300D X 500H)	\$328.90
AT1000	Poly Aquaculture Tub - 1000 Ltr - (1650D X 600H)	\$480.70
AT1000T	Poly Aquaculture Tub (Tall) - 1000 Ltr - (850H X 1350D)	\$480.70
AT1500	Poly Aquaculture Tub - 1500 Ltr - (2000D X 650H)	\$724.90
AT2000	Poly Aquaculture Tub - 2000 Ltr - (2300D X 650H)	\$829.40
AT3000	Poly Aquaculture Tub - 3000 Ltr - (2300D X 950H)	\$965.80
AT5000	Poly Aquaculture Tub - 5000 Ltr - (2700D X 1000H)	\$1,289.20
AT5000S	Poly Aquaculture Tub - Sump Drain - 5000 Ltr - (2700D X 1000H)	\$1,289.20
AT5000BASE	Poly Aquaculture Tub Base To Suit (AT5000) - (2700D X 300H)	\$949.30
AT9000	Poly Aquaculture Tub - 9000 Ltr - (3500D X 1000H)	\$1,843.60
AT9000S	Poly Aquaculture Tub - Sump Drain - 9000 Ltr - (3500D X 1000H)	\$1,843.60
AT9000BASE	Poly Aquaculture Tub Base To Suit (AT9000) - (3300D X 350H)	\$1,872.20
AT10000	Poly Aquaculture Tub - 10,000 Ltr - (3450D X 1300H)	\$2,080.10
AT10000S	Poly Aquaculture Tub - Sump Drain - 10,000 Ltr - (3450D X 1000H)	\$2,080.10
AT10000BASE	Poly Aquaculture Tub Base To Suit (AT10000) - (3500D X 350H)	\$1,962.40



Pedestrian Barriers

Pedestrian Barriers

PB-01



Features

- One piece rotomoulded polyethylene
- Barrier units are interlinkable
- UV stabilised and forkliftable
- Fill with water for increased stability & security
- Great for event management, crowd control, safety barricades and traffic direction*

*This barrier product is not a certified crash barrier.

Pedestrian Barriers

Code	Description (mm)	Retail Pricing (inc GST)
PB-01	Pedestrian Barrier - 2400L X 910H - Including Pin	\$440.00



Septic Tanks

Septic Systems



SEP-1450



SEP-2200



SEP-4000 (Baffled)

Features

- Lightweight, easy to transport and install
- Manufactured from durable polyethylene
- Anti floatation ring and ribbing incorporated into design
- Certified to Australia Standard AS/NZS1456.1 and approved by Department of Health - WA
- Supplied as complete kit including lid, inlet & outlet 'T' pieces
- Leach Drain systems also available (see next page)

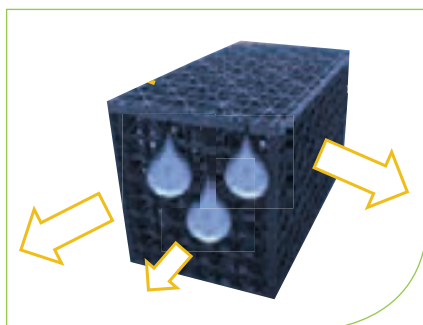
Septic Tanks

Code	Description (mm)	Retail Pricing (inc GST)
SEP-1450	1,450ltr Septic Tank (1250D x 1500H)	\$760.10
SEP-2200	2,200ltr Septic Tank (1540D x 1500H)	\$794.20
SEP-4000	4,000ltr Baffled Septic Tank (2200D x 1770H)	\$1,570.80



Leach Drain Systems

Septic Systems



Features

- 100% recycled
- Light weight
- Modular
- 95% void area
- Strong
- Service temperature, -20°C – 120°C
- Polypropylene
- Flat pack form

Benefits

- Environmentally friendly
- Simple to install
- Trafficable
- Cost effective
- Chemically inert
- Not affected by mould or algae
- UV stabilised
- Water saving
- 100% recyclable



Coerco's leach drain systems are design to integrate efficiently with our septic tank units although can be utilised in any waste water situation requirement that requires a leaching system. Manufactured from strong light weight polypropylene they are an easy to install cost effective solution for effluent waste issues. They are flat packed for easy and efficient logistics. The systems are very flexible with a range of configurations for every individual requirement and designed to meet strict industry regulations and standards.

Leach Drain Systems

Code	Description	Retail Pricing (inc GST)
RS-LD500	5.00Mtr (Includes 22 Large Panels, 21 Small Panels & Geocloth 6.0M X 2M)	\$246.40
RS-LD572	5.72Mtr (Includes 25 Large Panels, 24 Small Panels & Geocloth 7.0M X 2M)	\$287.10
RS-LD643	6.43Mtr (Includes 28 Large Panels, 27 Small Panels & Geocloth 7.5M X 2M)	\$365.20
RS-LD786	7.86Mtr (Includes 34 Large Panels, 33 Small Panels & Geocloth 9.0M X 2M)	\$403.70
RS-LD858	8.58Mtr (Includes 37 Large Panels, 36 Small Panels & Geocloth 10M X 2M)	\$443.30
RS-LD930	9.30Mtr (Includes 40 Large Panels, 39 Small Panels & Geocloth 10.5M X 2M)	\$480.70
RS-LD1000	10.00Mtr (Includes 43 Large Panels, 42 Small Panels & Geocloth 11M X 2M)	\$559.90
RS-LD1144	11.44Mtr (Includes 49 Large Panels, 48 Small Panels & Geocloth 12.5M X 2M)	\$599.50
RS-LD1287	12.87Mtr (Includes 55 Large Panels, 54 Small Panels & Geocloth 14.0M X 2M)	\$639.10
RS-LD1358	13.58Mtr (Includes 58 Large Panels, 57 Small Panels & Geocloth 15.0M X 2M)	\$716.10
RS-LD1430	14.30Mtr (Includes 61 Large Panels, 60 Small Panels & Geocloth 15.5M X 2M)	\$757.90
RS-LD1501	15.01Mtr (Includes 64 Large Panels, 63 Small Panels & Geocloth 16.0M X 2M)	\$797.50
RS-LD1573	15.73Mtr (Includes 67 Large Panels, 66 Small Panels & Geocloth 17.0M X 2M)	\$836.00
RS-LD1644	16.44Mtr (Includes 70 Large Panels, 69 Small Panels & Geocloth 17.5M X 2M)	\$874.50
RS-LD1716	17.16Mtr (Includes 73 Large Panels, 72 Small Panels & Geocloth 18.5M X 2M)	\$915.20
RS-LD1787	17.87Mtr (Includes 76 Large Panels, 75 Small Panels & Geocloth 19.0M X 2M)	\$953.70
RS-LD1859	18.59Mtr (Includes 79 Large Panels, 78 Small Panels & Geocloth 20.0M X 2M)	\$992.20
RS-LD1930	19.30Mtr (Includes 82 Large Panels, 81 Small Panels & Geocloth 20.5M X 2M)	\$1,032.90
RS-LD2002	20.02Mtr (Includes 85 Large Panels, 84 Small Panels & Geocloth 21.0M X 2M)	\$1,056.00
RS-LD2073	20.73Mtr (Includes 88 Large Panels, 87 Small Panels & Geocloth 22.0M X 2M)	\$1,071.40
RS-LD2145	21.45Mtr (Includes 91 Large Panels, 90 Small Panels & Geocloth 22.5M X 2M)	\$1,109.90
RS-LD2216	22.16Mtr (Includes 94 Large Panels, 93 Small Panels & Geocloth 23.5M X 2M)	\$1,151.70
RS-LD2288	22.88Mtr (Includes 97 Large Panels, 96 Small Panels & Geocloth 24M X 2M)	\$1,191.30
RS-LD2359	23.59Mtr (Includes 100 Large Panels, 99 Small Panels & Geocloth 25.0M X 2M)	\$1,228.70
RS-LD2431	24.31Mtr (Includes 103 Large Panels, 102 Small Panels & Geocloth 25.5M X 2M)	\$1,309.00
RS-LD2502	25.02Mtr (Includes 106 Large Panels, 105 Small Panels & Geocloth 26.0M X 2M)	\$1,345.30
RS-LD2574	25.74Mtr (Includes 109 Large Panels, 108 Small Panels & Geocloth 27.0M X 2M)	\$1,375.00
RS-LD2645	26.45Mtr (Includes 112 Large Panels, 111 Small Panels & Geocloth 27.5M X 2M)	\$1,402.50
RS-LD2717	27.17Mtr (Includes 115 Large Panels, 114 Small Panels & Geocloth 28.5M X 2M)	\$1,425.60
RS-LD2788	27.88Mtr (Includes 118 Large Panels, 117 Small Panels & Geocloth 29.0M X 2M)	\$1,466.30
RS-LD2860	28.60Mtr (Includes 121 Large Panels, 120 Small Panels & Geocloth 30.0M X 2M)	\$1,502.60
RS-LD2931	29.31Mtr (Includes 124 Large Panels, 123 Small Panels & Geocloth 30.5M X 2M)	\$1,543.30
RS-LD3003	30.03Mtr (Includes 127 Large Panels, 126 Small Panels & Geocloth 31.0M X 2M)	\$1,585.10
RS-LD3074	30.74Mtr (Includes 130 Large Panels, 129 Small Panels & Geocloth 32.0M X 2M)	\$1,621.40
RS-LD3146	31.46Mtr (Includes 133 Large Panels, 132 Small Panels & Geocloth 32.5M X 2M)	\$1,641.20
RS-LD3217	32.17Mtr (Includes 136 Large Panels, 135 Small Panels & Geocloth 33.5M X 2M)	\$1,675.30
RS-LD3289	32.89Mtr (Includes 139 Large Panels, 138 Small Panels & Geocloth 34.0M X 2M)	\$1,701.70
RS-LD3360	33.60Mtr (Includes 142 Large Panels, 141 Small Panels & Geocloth 35.0M X 2M)	\$1,741.30
RS-LD3432	34.32Mtr (Includes 145 Large Panels, 144 Small Panels & Geocloth 35.5M X 2M)	\$1,780.90
RS-LD3503	35.03Mtr (Includes 148 Large Panels, 147 Small Panels & Geocloth 36.0M X 2M)	\$1,820.50
RS-LD3575	35.75Mtr (Includes 151 Large Panels, 150 Small Panels & Geocloth 37.0M X 2M)	\$1,860.10
RSLD-CELL33	Leach Drain Cell (3 X Large And 3 X Small Panels) - 715 (L) X 400 (W) X 440 (H) Mm	\$33.00
RSLD-CELL43	Leach Drain Cell (4 X Large And 3 X Small Panels) - 715 (L) X 400 (W) X 420 (H) Mm	\$38.50

Product Benefits

Coerco products are manufactured from the highest food grade material conforming to Australian standards. These products are strong, lightweight, UV resistant and exceptionally durable.

Product Specifications

All specifications are subject to change in line with on-going improvements.

Pricing Includes GST

All prices specified include GST and are subject to change without notice.

Product Design Protection

Many of Coerco products are subject of an Australian Patent and pending design registration.

Sizes

All sizes, measurements and capacities throughout this brochure are only approximate due to the variable shrinkage nature of polyethylene during manufacture.

Placing Your Order

We have a diverse network of distributors throughout Western Australia. Contact your local Coerco agent or call us on 1800 646 277.

Product Returns

All products returned for credit must be in "As New" condition and are subject to a 15% restocking fee and a return freight cost.

Warranty

All our products are guaranteed against faulty workmanship and carry a warranty.

Minimum Orders

Any order under \$55 including GST is subject to a postage and handling fee of \$16.50 including GST.

Disclaimer

All recommendations within this sales catalogue are intended as suggestions only. Coerco does not take any responsibility for the suitability of any product for the use it is given. Product images are a close guide only and may not represent actual product.

Trademarks & Copyright

© Coerco 2017. This publication is copyrighted to Coerco.

Delivery Requirements

Please be aware that our truck and trailer combinations require clearance of 20 metres long, 3.5 metres wide and 5 metres high. Clear access on roads, lane ways, through gateways, crossings and trees are essential to ensure safe delivery of your tank / products without damage.

If a driver cannot reach the location the tank/s will be left at the closest practical position. Large tanks can be delivered direct to property where there is a properly made road and large turning area available. It is the owners responsibility to provide clear access to site.

Placement of tanks above 9,500ltr on pad needs customer assistance, eg. three persons (not including driver) required to place 22,500 - 50,000ltr tanks. It is the customers responsibility to ensure there is adequate assistance available. Special conditions and costs may apply to delivery of 50,000Ltr poly storage tanks based on their specific delivery locations.

Freight

Zone 1: Freight is free to property (access permitting) for tanks above 9000Ltr, alternatively freight is free to your nearest distributor. *Conditions apply.

Zone 2: Apply for competitive quotation.

Installation

Entry to tank not required when installing. Never enter a tank alone, always have an attendant standing by.

Restricted Space - only enter after carrying out a risk assessment.

A firm solid base, either 75-100mm (3-4") of sand or a concrete slab must be provided to support the tank fully. Sand base should extend out at least 300mm (12") past side walls of tank with a timber or similar edging to prevent erosion. If a tank stand is being used, decking should be no more than 50mm (2") apart. When plumbing up, a flexible hose with a length of approx. 300mm (12") should be used from the ball valve to absorb any shocks or movements. Overflow should be piped well clear of the tank to avoid any undermining of base. If tank is placed on a stand, support pipe work off the stand, never support pipe work off the tank.

The tank site must be level and flat, the area well compacted and free from any rocks, stones and sharp objects. Ensure that the tanks site is at least 600mm (24") larger in diameter than the tank.

Either a 75mm (3") compacted sand base, or other consolidated fill i.e. crusher dust, may be used as a tank pad. A concrete pad is also acceptable and must be greater than the diameter of the tank.

If a compact sand base or other consolidated fill is used, a retaining wall or surround must be provided to prevent erosion. The overflow must be piped well clear of the tank to avoid undermining of the tank base.

Ensure that a flexible hose of at least 300mm (12") is installed after the tank valve to absorb any shocks or movement. Failure to install properly will void warranty.



Notes

[illegible]

Notes

[illegible]

Notes

[illegible]



coerco
Engineered Poly Products

Coerco Pty Ltd
ABN 54 145 356 565

9 Huggett Drive
Dalwallinu
Western Australia 6609
PO BOX 319 Dalwallinu
Western Australia 6609

Freecall 1800 646 277
Phone 08 9661 0610
Fax 08 9661 1515
info@coerco.com.au
www.coerco.com.au